



# CAAC Design and Construction Update

1-20-2022



# 2021/22 Projects

## New Buildings & Additions

# Alameda HS – Addition WOLD – CMGC Phipps

Construction

Moved-In  
1/18/22



# Alameda HS – Addition WOLD – CMGC Phipps

Construction

Moved-In  
1/18/22



# Alameda HS – Addition WOLD – CMGC Phipps

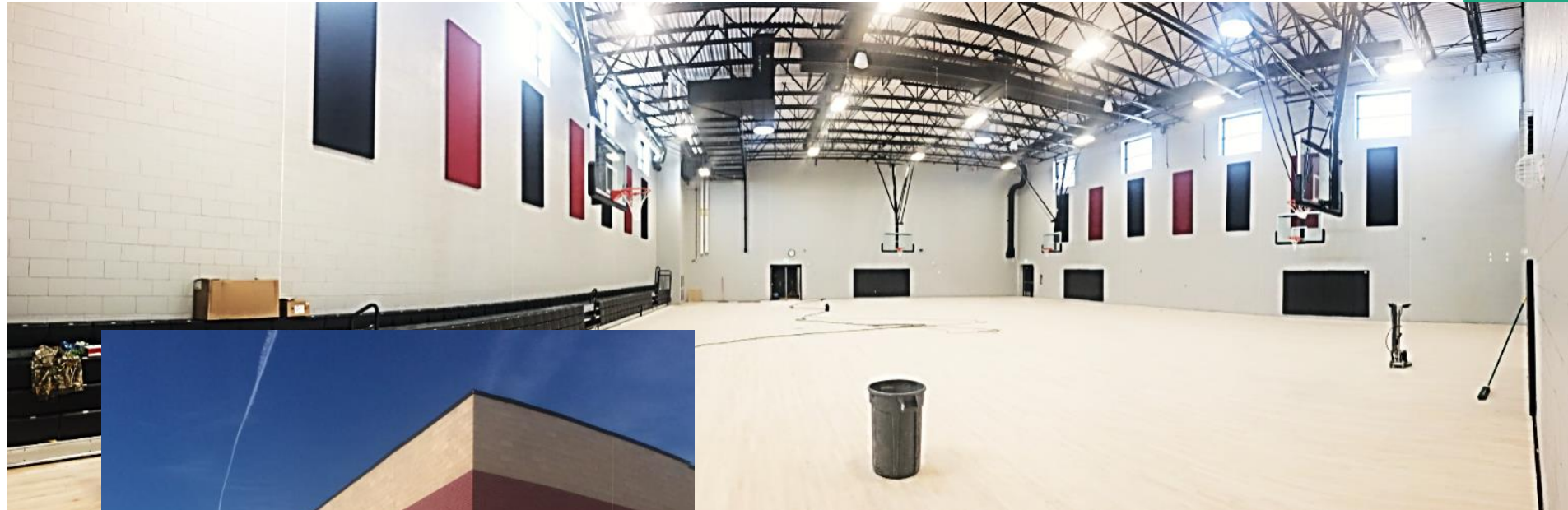
Construction

Moved-In  
1/18/22



# Pomona HS – Aux Gym Addition Sybazz – CMGC Saunders

Construction



# Marshdale ES - Replacement HCM – GC GH Phipps

Construction  
Topping Out  
Celebration  
1/18/22



D'Evelyn – 8 CR Addition  
HCM – GC Himmelman

Construction





# Powderhorn ES - Addition Hollis & Miller – Himmelman

Construction



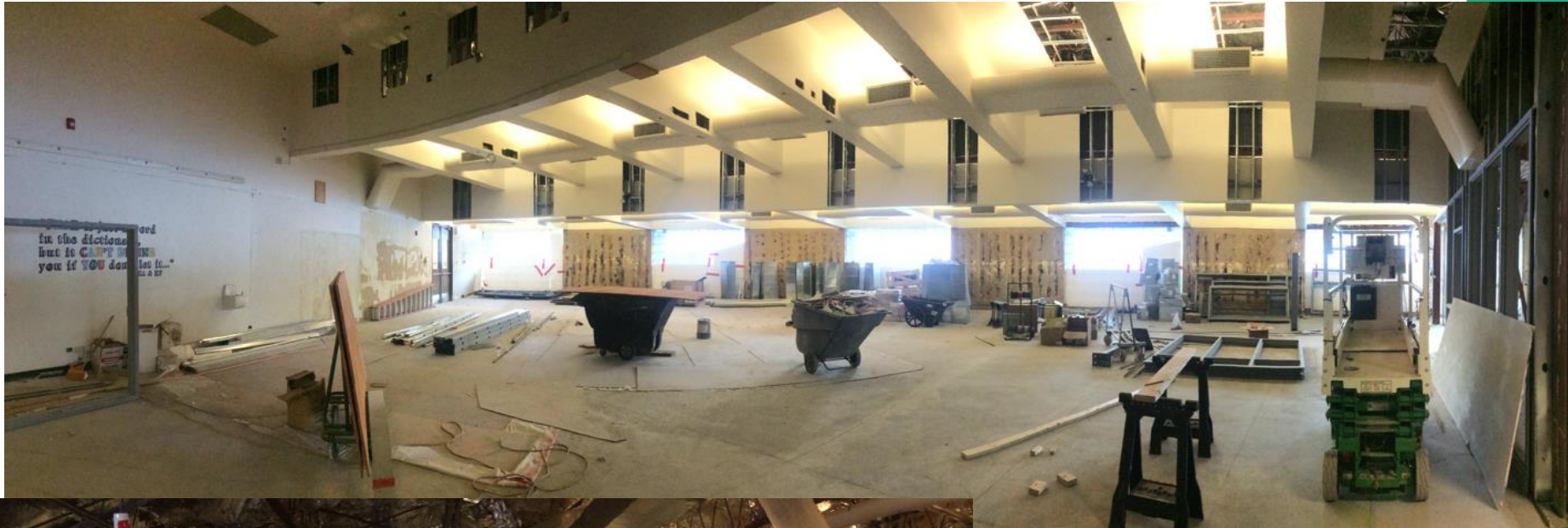
# Prospect Valley ES - Replacement MOA – GH Phipps

Construction



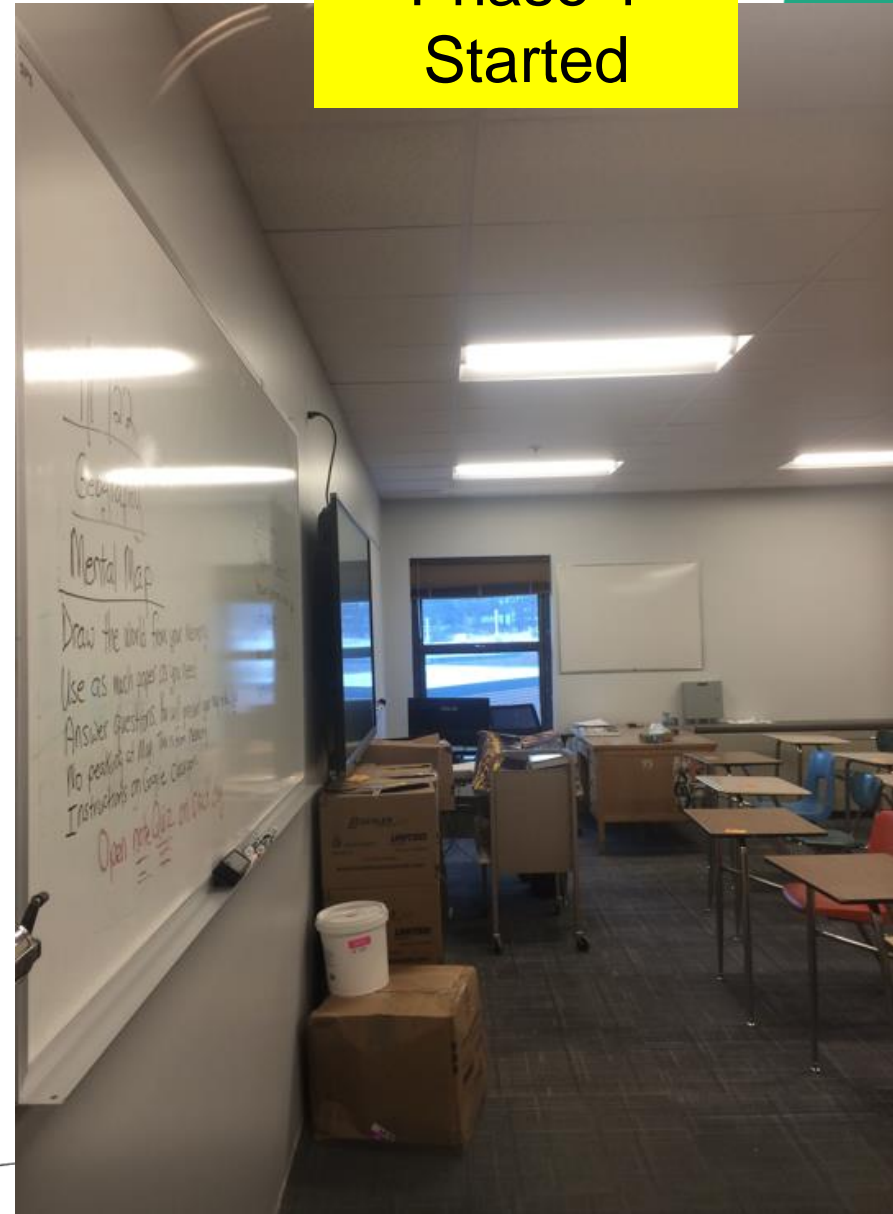
# Evergreen MS Efficiency & Future Ready Construction

## AMD – Haselden



# Evergreen HS Efficiency Future Ready DLR – CMGC JHL

Construction  
Phase 1  
Started



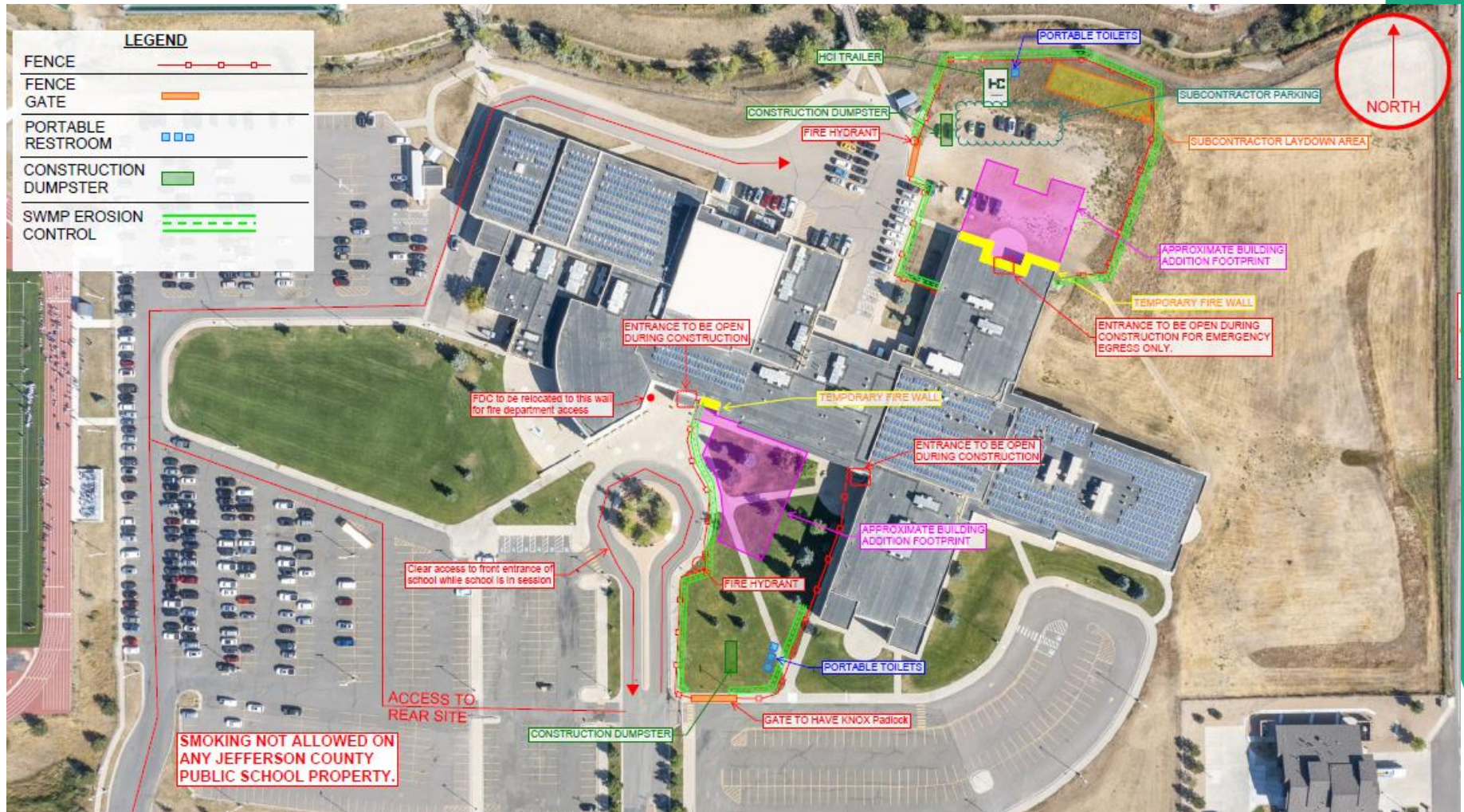
# Jeffco Open - Addition HCM - Bassett

Construction



# Ralston Valley HS - Addition EUA - Himmelman

## Construction Mobilization



# Standley Lake HS - Addition Cannon – FCI Constructors

Construction  
Mobilization



# 2022

# 44 - Efficiency

# Future Ready

# &

# DW projects



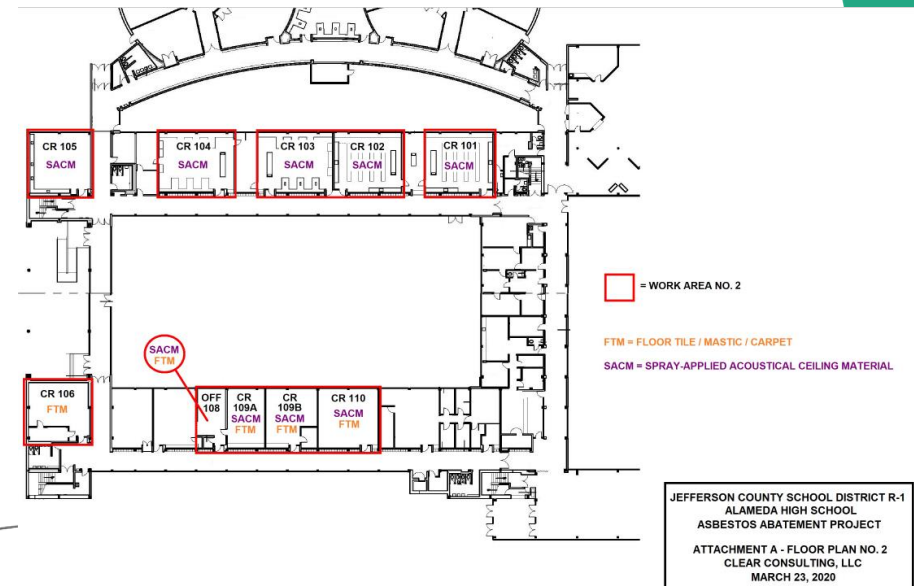
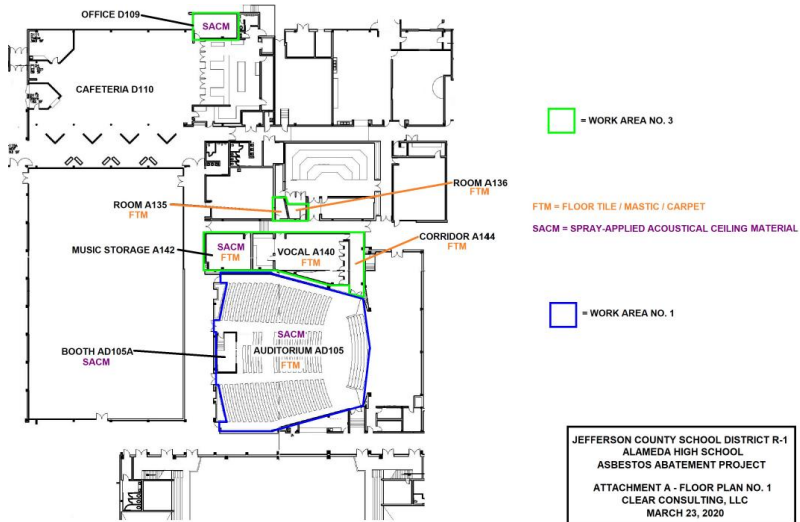
# Alameda Int'l Jr-Sr HS - Abatement

## Clear – Earth Services & Abatement Inc

Bid

\$981,488

BOE 2/3/22



DW – Roofing -  
 Campbell ES (Grabau), Fairmount ES (FR) ,  
 S Lakewood ES (DC), Summit Ridge MS (UM),  
 Pennington ES (Grabau)  
 SR+DK

**Construction  
 Summit R  
 MS  
 BOE 2/3/22**

Full Name	Project Scope	Construction Budget	Total Project Budget
<b>DW Roofing</b>	Campbell ES	\$213,730	\$273,000
	Fairmount ES	\$202,632	\$258,825
	S Lakewood ES	\$365,630	\$467,024
	Pennington ES	\$554,994	\$708,902
	Summit Ridge ES	\$894,841	\$1,142,994
		<b>\$2,231,827</b>	<b>\$2,850,745</b>
Project Construction Budget			<b>\$2,231,827</b>
Bids			<b>\$2,360,266</b>
Over Budget - Funded from Project Contingency			<b>(\$128,439)</b>

DW – Roofing  
Pennington ES  
Roof Tech – Grabau

Construction  
Material  
Acquisition



# DW – Roofing - Campbell, Fairmount, S Lakewood & Summit Ridge, Roof Tech – Contractor TBD

Construction

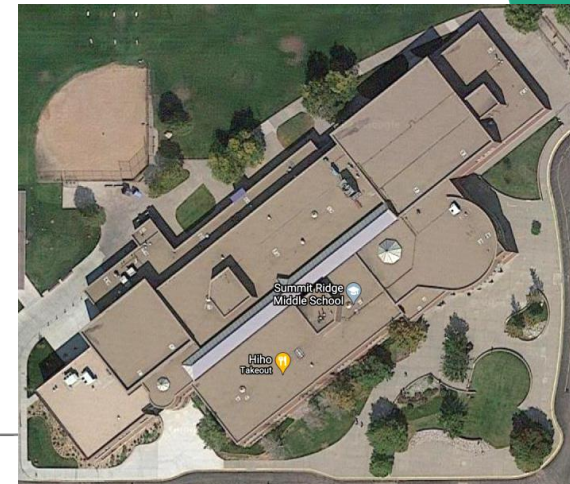


S Lakewood

Fairmount



Campbell



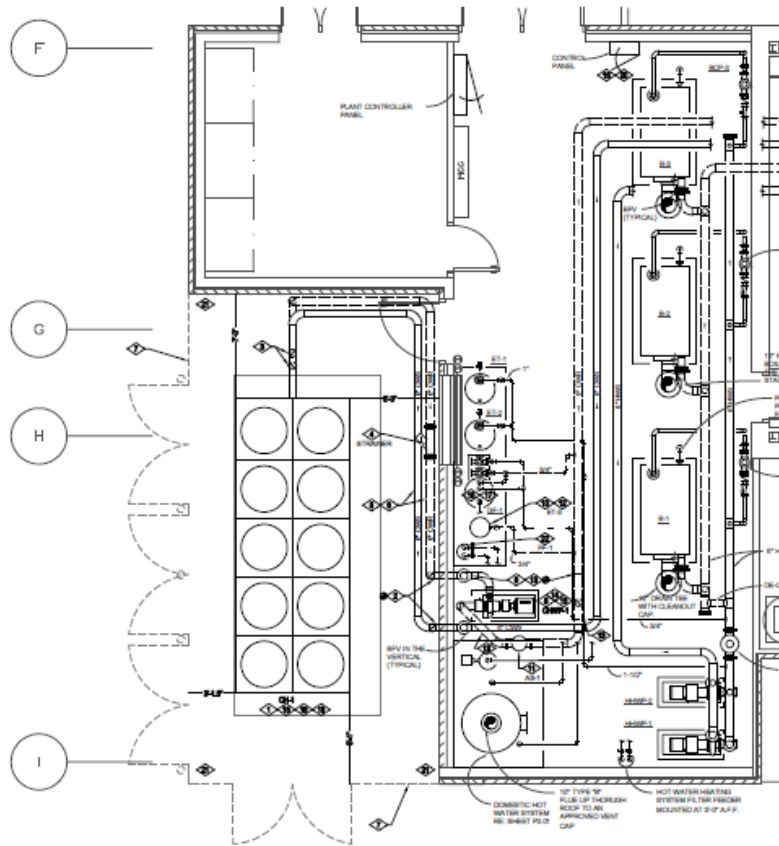
Summit Ridge BOE 2/3/22

# Efficiency Future Ready North Arvada MS

Columbine Engineering – TBD

Construction

Bid  
\$442,000



ENLARGED MECHANICAL ROOM NEW WORK PLAN

SCALE: 1/4" = 1'-0"

# DW Mechanical 2022

## Campbell ES, Little ES & Van Arsdale ES

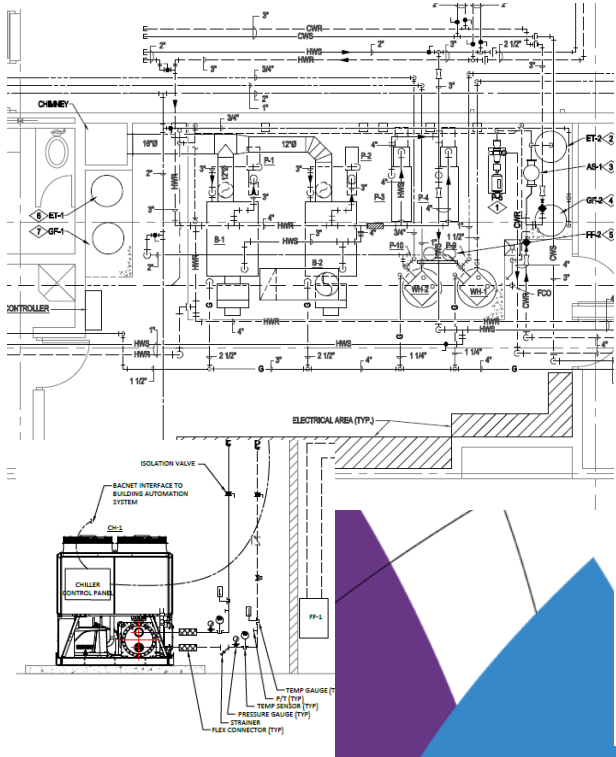
### Columbine Engineering – US Engineering

Full Name	Project Scope	Construction Budget	Total Project Budget
<b>DW Mechanical</b>	Campbell ES	\$505,083	\$645,750
	Little ES	\$1,272,973	\$1,627,500
	Van Arsdale ES	\$1,818,134	\$2,324,490
		<b>\$3,596,189</b>	<b>\$ 4,597,740</b>
Project Construction Budget			<b>\$3,596,189</b>
Bid plus Alt #5 - US Engineering			<b>\$3,794,160</b>
Over Budget - Funded from Project Contingency			<b>(\$197,971)</b>

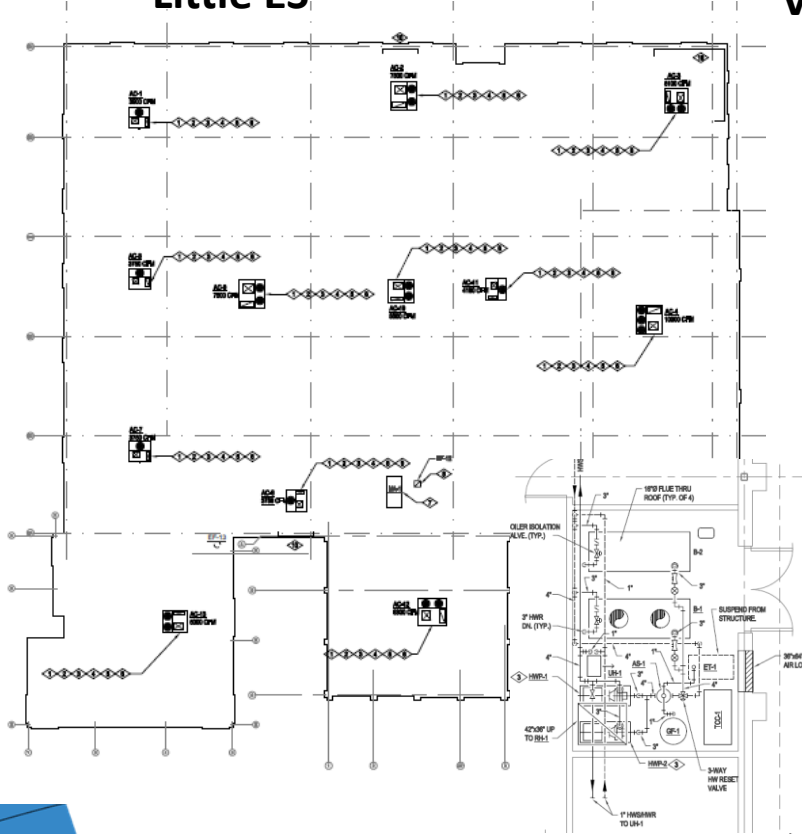
# DW Mechanical 2022 Campbell ES, Little ES & Van Arsdale ES

## Columbine Engineering – US Engineering

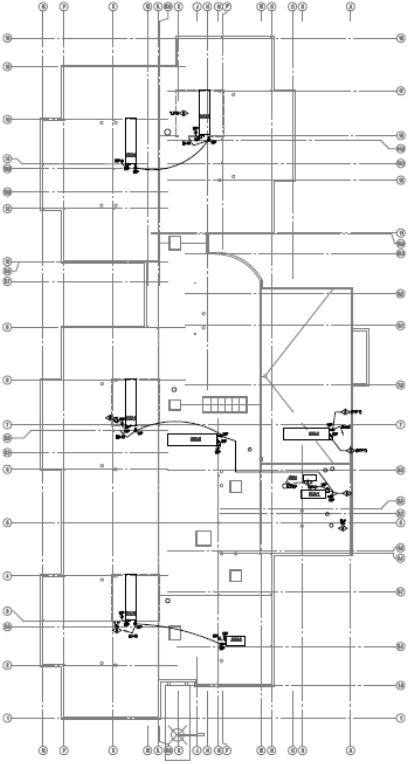
Campbell ES



Little ES



Van Arsdale ES



DW – Flooring II  
 Glennon Heights ES, Little ES, Parr ES  
 Pennington ES, S Lakewood ES  
 Swanson ES, Van Arsdale ES  
 studitrope – TBD

Construction  
 BOE 2/3/22

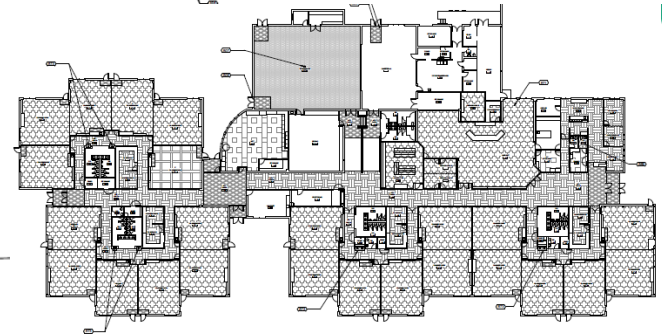
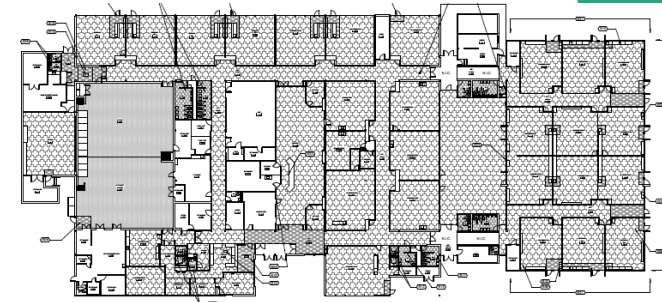
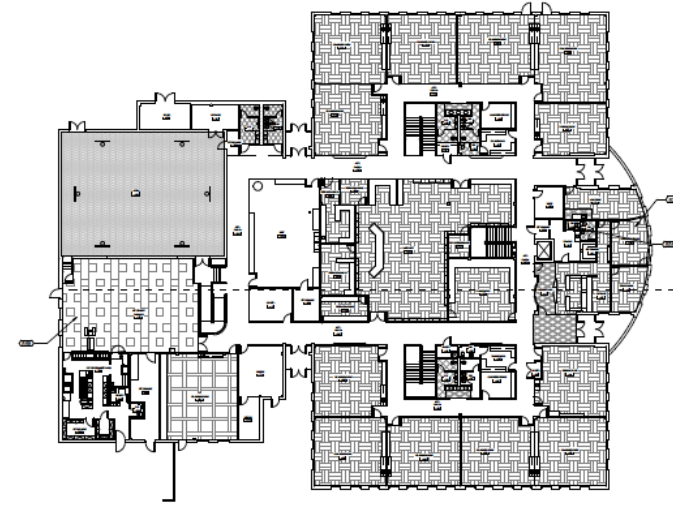
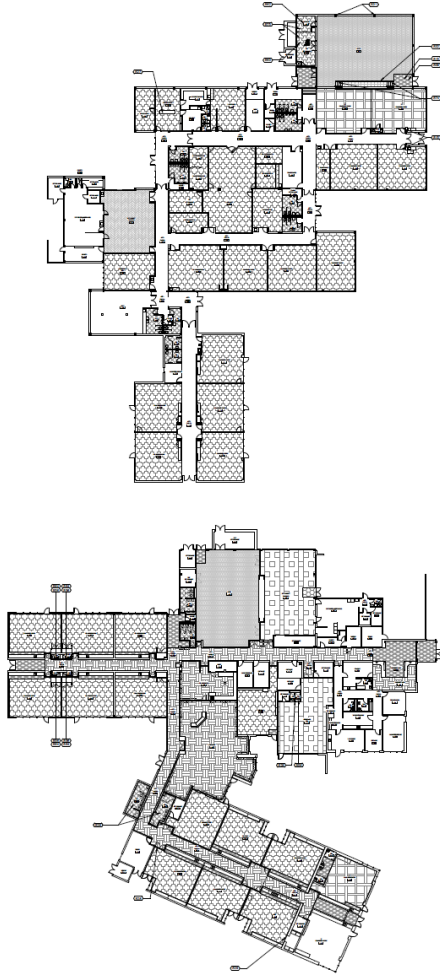
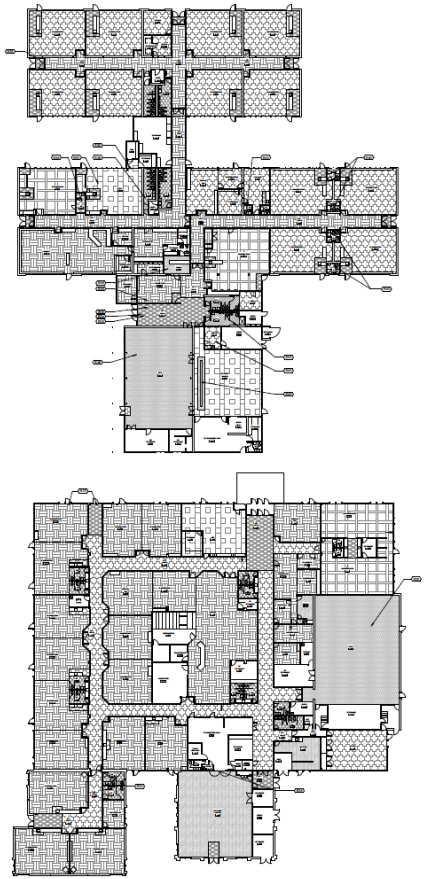
Full Name	Project Scope	Construction Budget	Total Project Budget
<b>DW Flooring</b>	18000 - Glennon Heights ES	\$ 197,325	\$ 249,040
	32100 - Parr ES	\$ 35,197	\$ 45,000
	32500 - Pennington ES	\$ 183,325	\$ 231,708
	43500 - Swanson ES	\$ 231,625	\$ 300,000
	44200 - Van Arsdale ES	\$ 115,197	\$ 144,040
	23500 - Little ES	\$ 162,325	\$ 205,710
	South Lakewood ES	\$ 117,325	\$ 150,000
		<b>\$1,042,318</b>	<b>\$ 1,325,498</b>
Project Construction Budget			<b>\$1,042,318</b>
Base Bid Plus Pennington alt 1			<b>\$1,240,300</b>
Over Budget			<b>(\$197,982)</b>



DW – Flooring II  
Glennon Heights ES, Little ES, Parr ES  
Pennington ES, S Lakewood ES  
Swanson ES, Van Arsdale ES

Construction  
BOE 2/3/22

studitrope – TBD



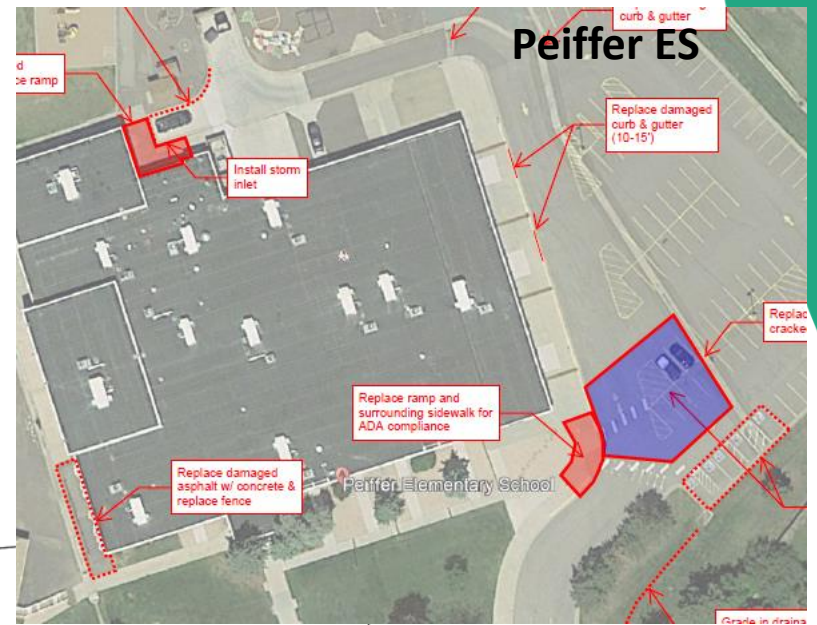
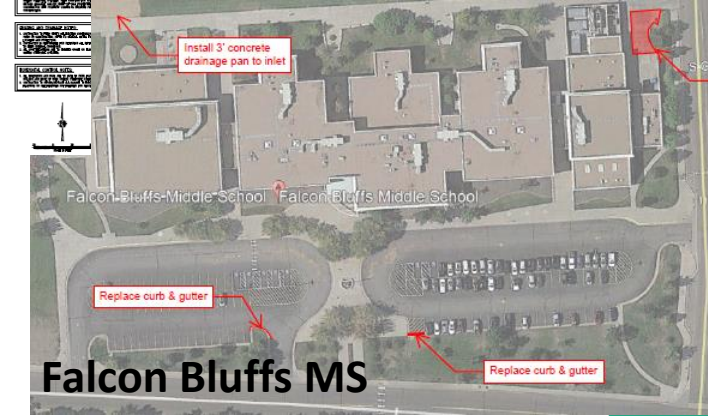
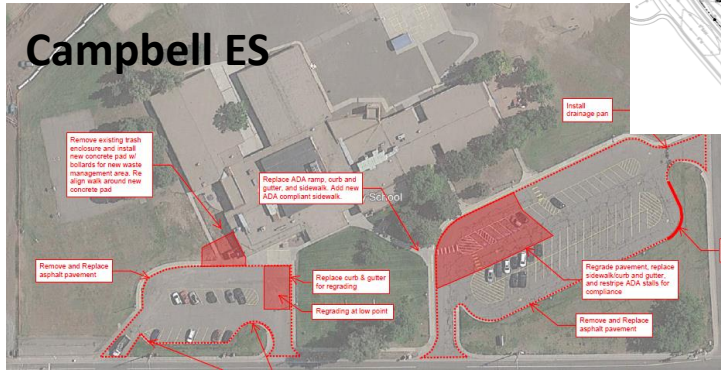
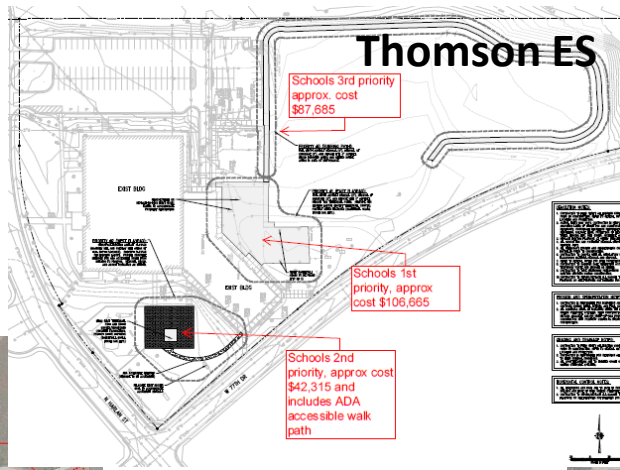
DW – Flooring I  
Dear Creek MS, Falcon Bluffs MS,  
Summit Ridge MS, Peiffer ES,  
*Governor's Ranch ES, Mt Carbon ES,  
Rooney Ranch ES*  
AMD – SCS Construction (3 Gym Floors)

Construction  
Documents  
Bids 2/23/22



# DW Paving 2022 JVA – TBD

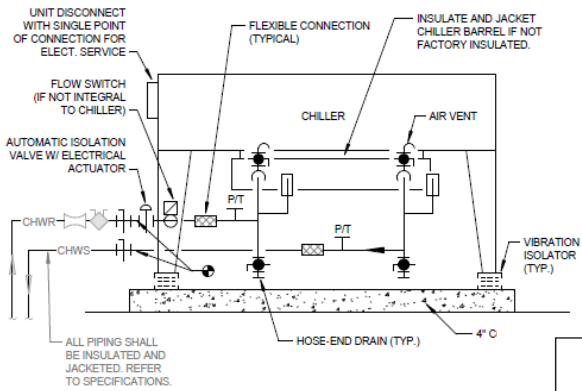
# Construction Documents Bids 2/9/22



# HVAC & Lighting Fairmount ES

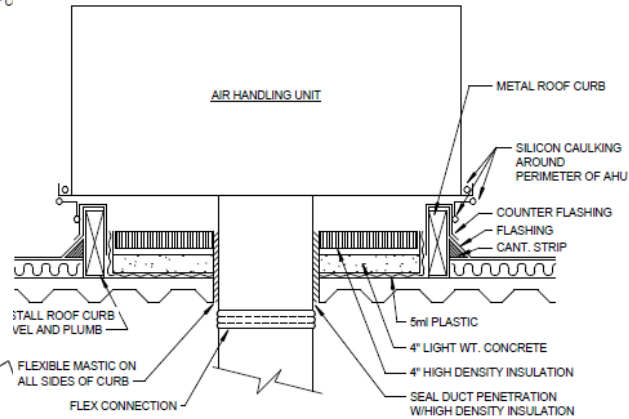
## Cator Ruma – TBD

# Construction Documents



**AIR COOLED CHILLER DETAIL**

SCALE: NONE

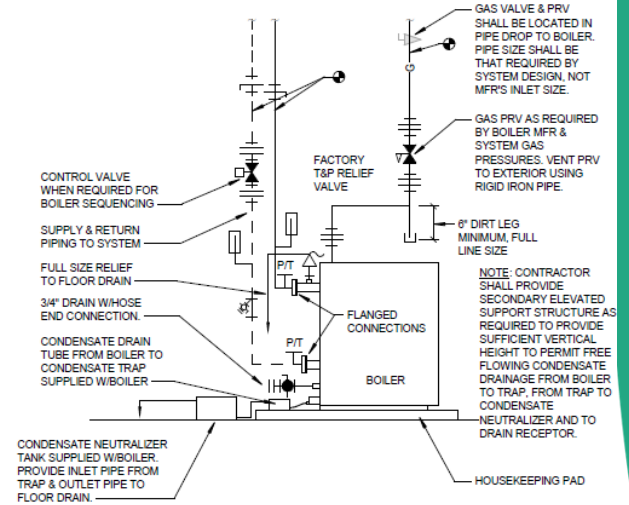


**NOTE:** ROOF CURB AND FLASHING SHALL BE INSTALLED BY THE NATIONAL ROOFING CONTRACTORS ASSOC. RECOMMENDATIONS AND DETAILS.

**ROOF MOUNTED AHU SUPPORT AND ISOLATION DETAIL**

SCALE: NONE

7443-02



**CONDENSING BOILER PIPING DETAIL**

SCALE: NONE

5200-01

**AIR HANDLING UNIT (DX) SCHEDULE**

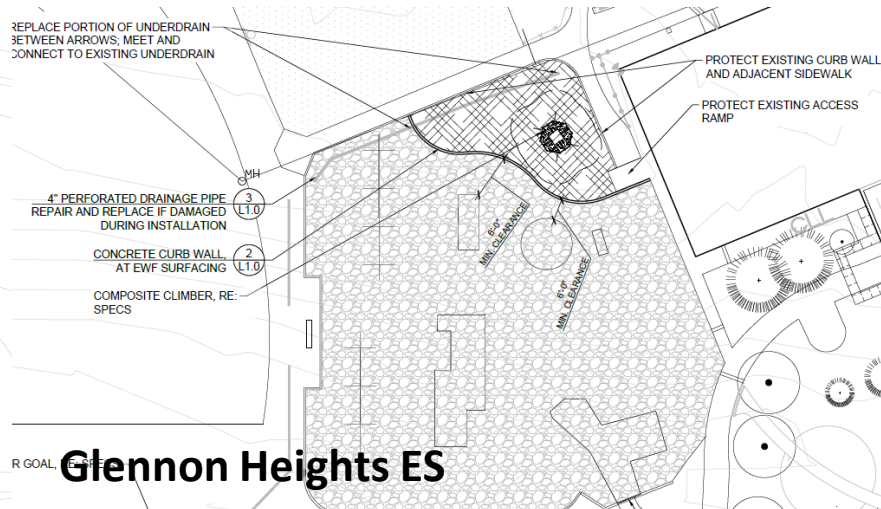
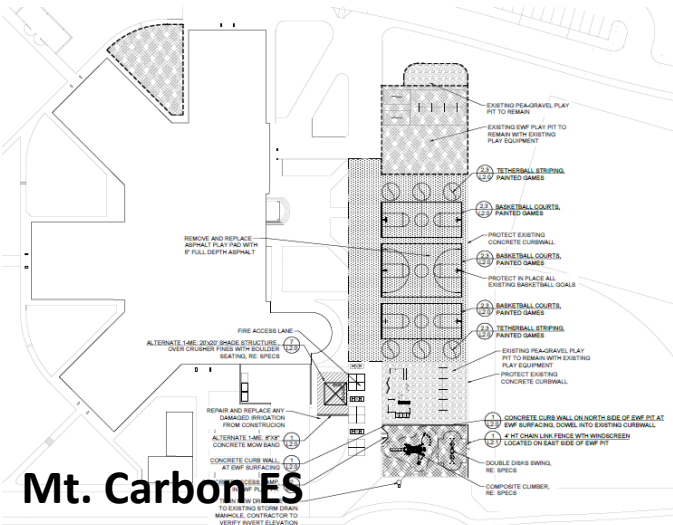
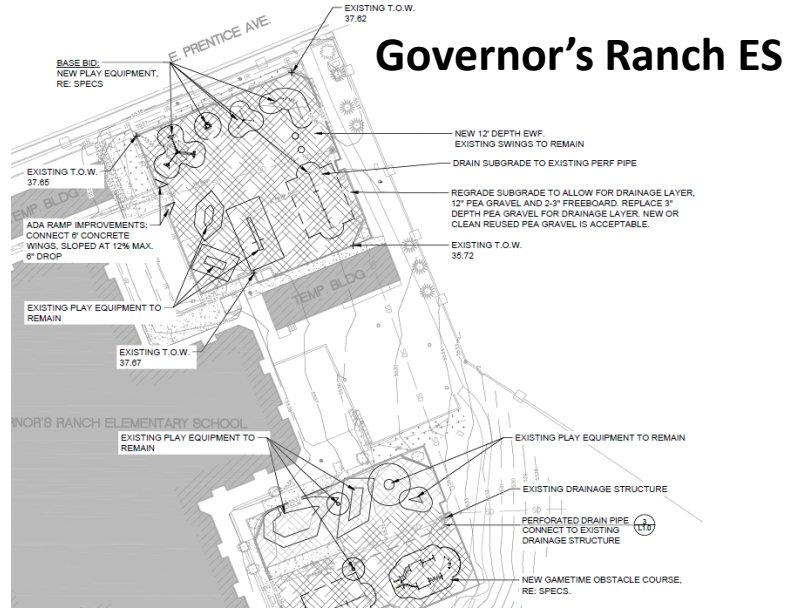
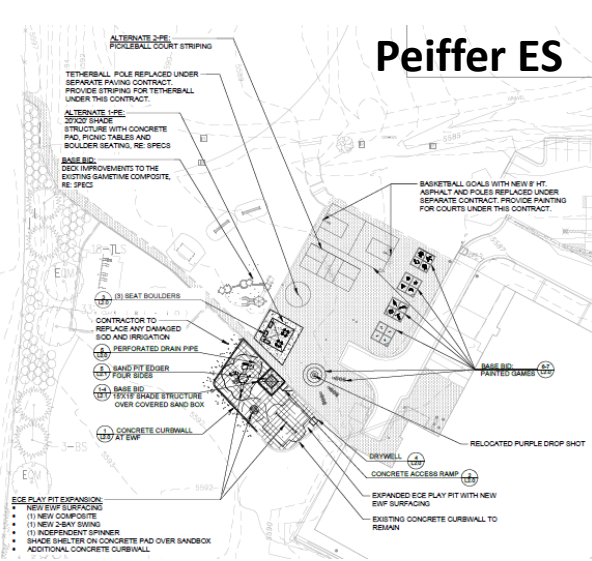
**COLUMN HEADING NOTES:**  
NOTE AA: THESE VALUES REFLECT THE EXPECTED OPERATIONAL CONDITIONS AT INITIAL START-UP (FOR INFORMATION ONLY.) ACTUAL VALUES SHALL BE DETERMINED BY TESTING & BALANCING.

**NOTE AB:** COIL FLOW IS ACTUAL FLOW THROUGH COIL. SYSTEM FLOW IS THE FLOW THROUGH THE CONTROL VALVE. THESE MAY BE DIFFERENT FOR PUMPED COILS.

DESIG.		AREA SERVED	MFR	MODEL NO.	OUTDOOR OR INDOOR CASING	OUTSIDE AIR CFM MIN.	AT ELEV			CONFIG		
NAME	NO.						CFM	ESP (IN WC)	TSP (IN WC)	NO. OF FANS	FANS/ROW	ROWS HIGH
AHU	1	AAON	RNA-031	OUTDOOR	2,875	11,865	1.30	0.00	0	0	0	
AHU	2	AAON	RN-013	OUTDOOR	1,500	5,255	1.50	0.00	0	0	0	
AHU	6	AAON	RN-007	OUTDOOR	320	2,530	1.50	0.00	0	0	0	
AHU	8	AAON	RNA-016	OUTDOOR	1,685	6,280	1.60	0.00	0	0	0	
AHU	9	AAON	RNA-011	OUTDOOR	1,395	4,950	1.60	0.00	0	0	0	
AHU	10	AAON	RNA-013	OUTDOOR	1,510	5,815	1.50	0.00	0	0	0	
AHU	11	AAON	RNA-011	OUTDOOR	1,075	4,920	1.60	0.00	0	0	0	

# DW Playgrounds I 2022 Design Concepts – TBD

## Construction Documents

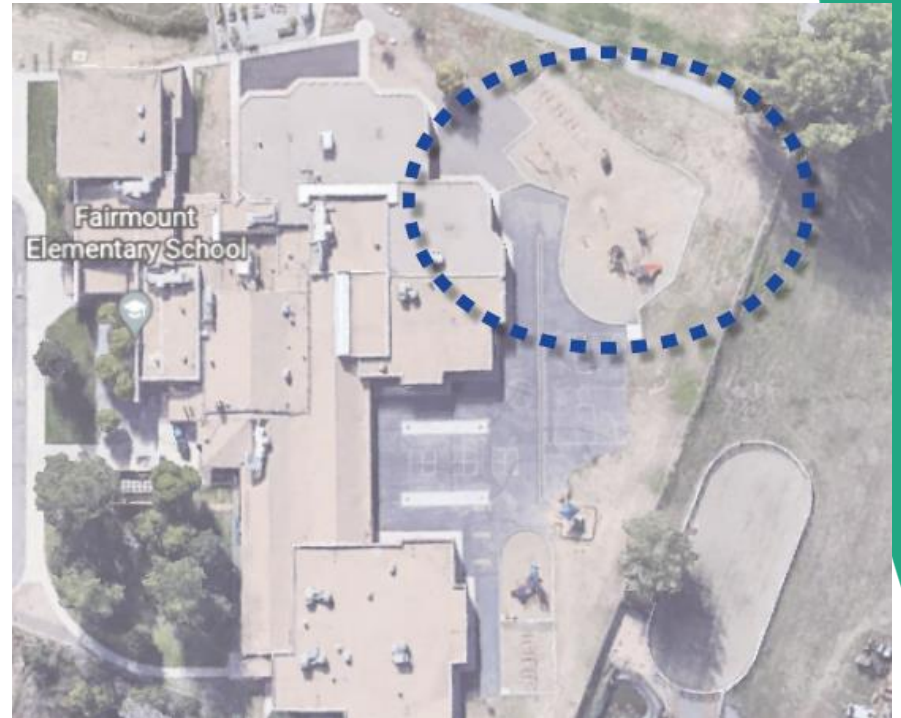


# DW Playgrounds II 2022 Lime Green – TBD

Design  
Development



**Campbell ES**



**Fairmount ES**

# DW LED 2022

## Ackerman – CMGC McKinstry

## Design Development



1. Lawrence ES
2. Brady
3. Bradford North
4. Bradford South
5. Ute Meadows ES
6. Leawood ES
7. Normandy ES
8. Rooney Ranch ES
9. Creighton MS
10. Moore MS
11. Weber ES
12. Meiklejohn
13. West Woods
14. Chatfield HS
15. Dakota Ridge HS

# Security Glass Installation 11 - Schools

Swanson	Glennon Heights
Arvada West	S Lakewood
Canpbell	Little
Fairmount	Parr
Bear Creek K8	Pennington
Summit Ridge	

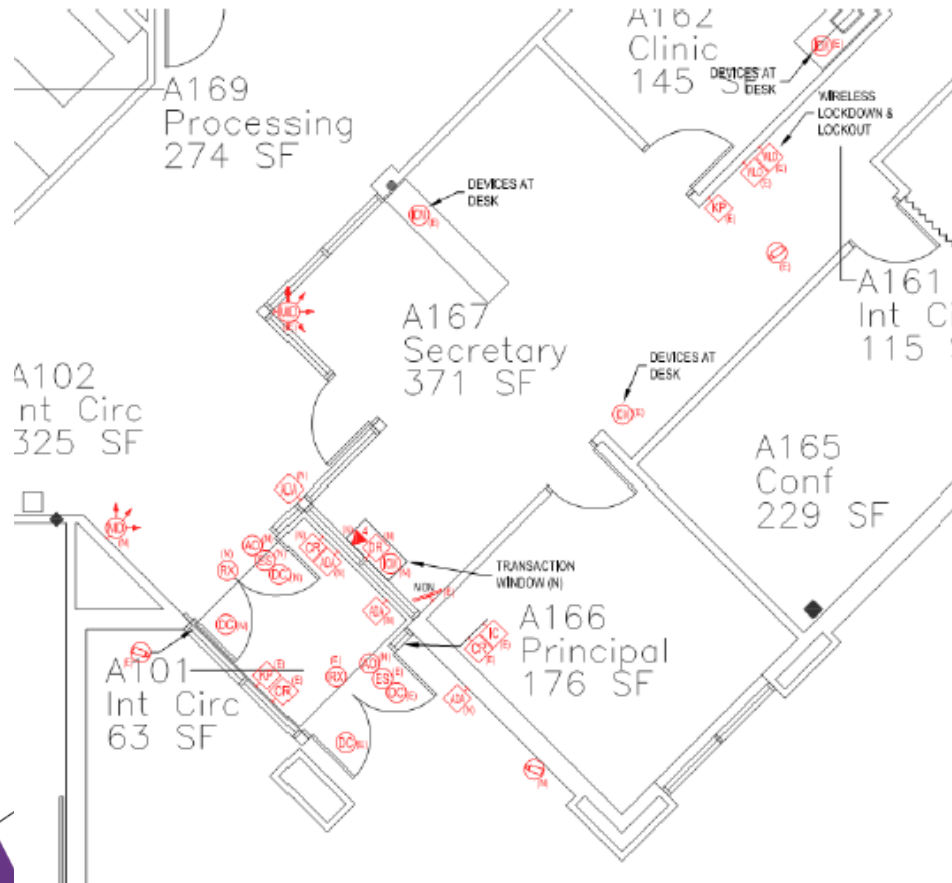




# Efficiency Future Ready Mortensen ES

Design  
Development  
Bids 3/10/22

## DLH – Contractor TBD

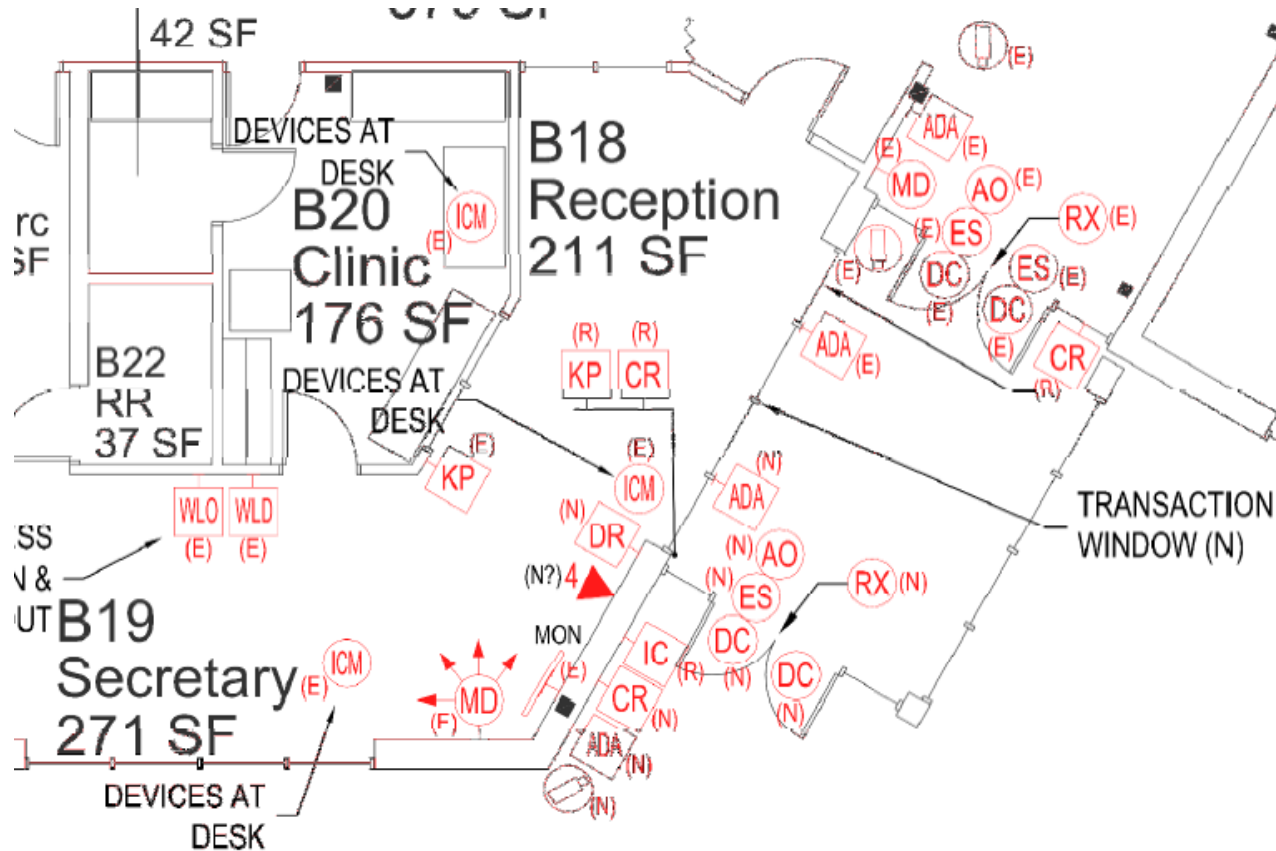


Secured Vestibule & Main Office Requirements

# Efficiency Future Ready Shaffer ES

Design  
Development  
Bids 3/10/22

## DLH – Contractor TBD



### Secured Vestibule Requirements

# Efficiency Future Ready Stony Creek ES

Construction  
Documents  
Bids 3/7/22

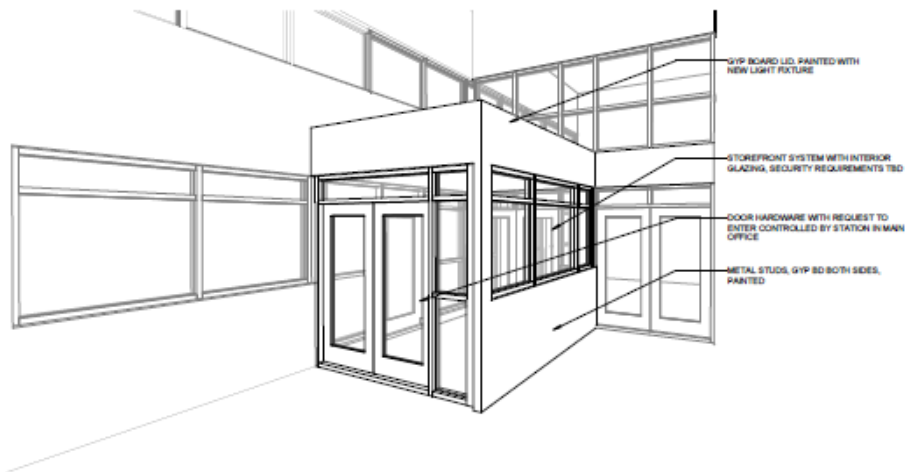
Jordin – Contractor TBD



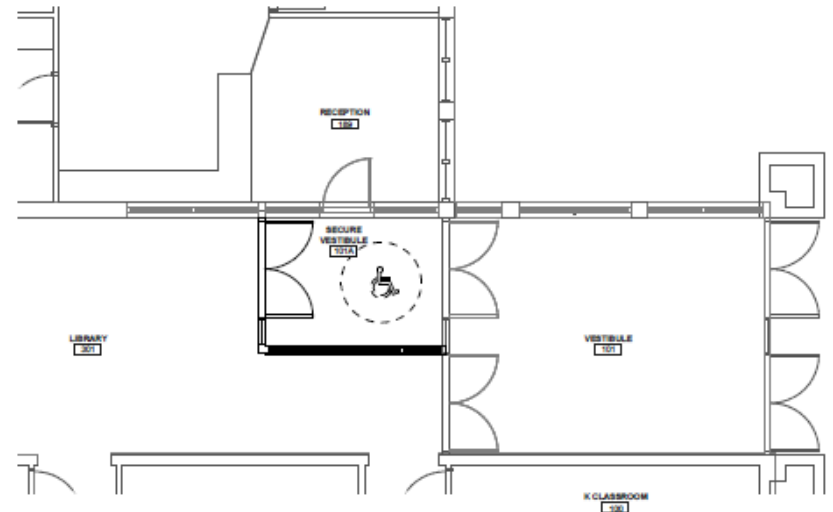
# Efficiency Future Ready Elk Creek ES

Construction Documents  
Bids 2/15/22

BVH – Contractor TBD



3 VESTIBULE PERSPECTIVE - FOR REFERENCE ONLY

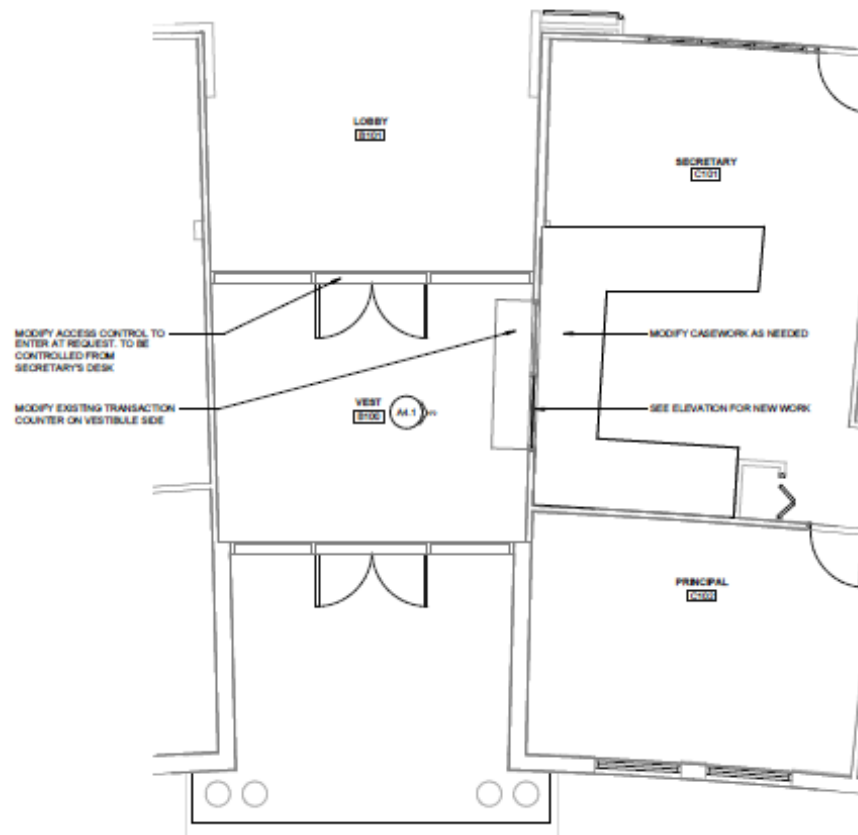


1 ENLARGED VESTIBULE PLAN  
1/8" = 1'-0"

# Efficiency Future Ready West Jefferson ES

Construction  
Documents  
Bids 2/15/22

## BVH – Contractor TBD

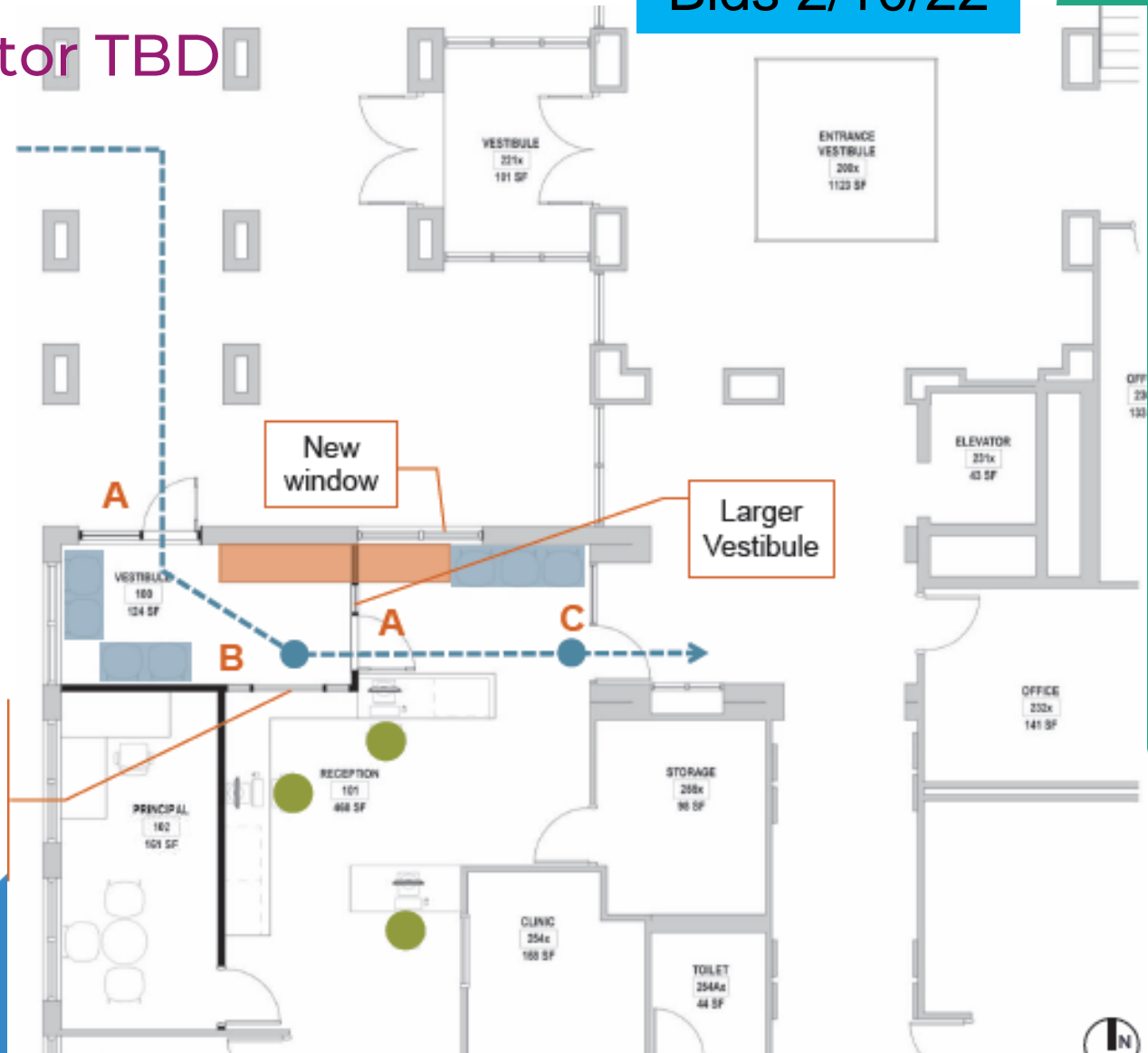


1 ENLARGED VESTIBULE PLAN  
1/4" = 1'-0"

# Efficiency Future Ready Mitchell ES

Construction  
Documents  
Bids 2/10/22

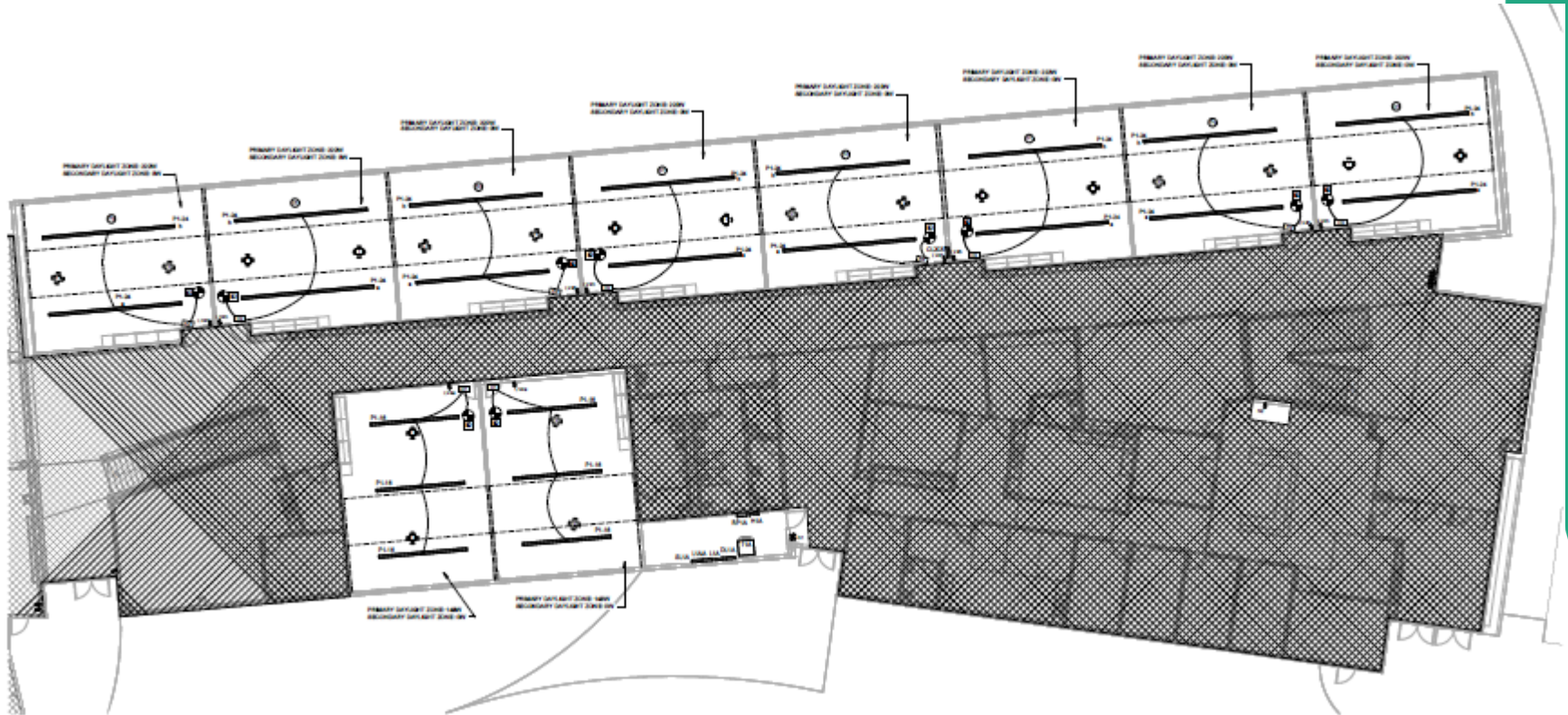
H&M – Contractor TBD



# Efficiency Future Ready Golden HS

Construction  
Documents  
Bids 2/10/22

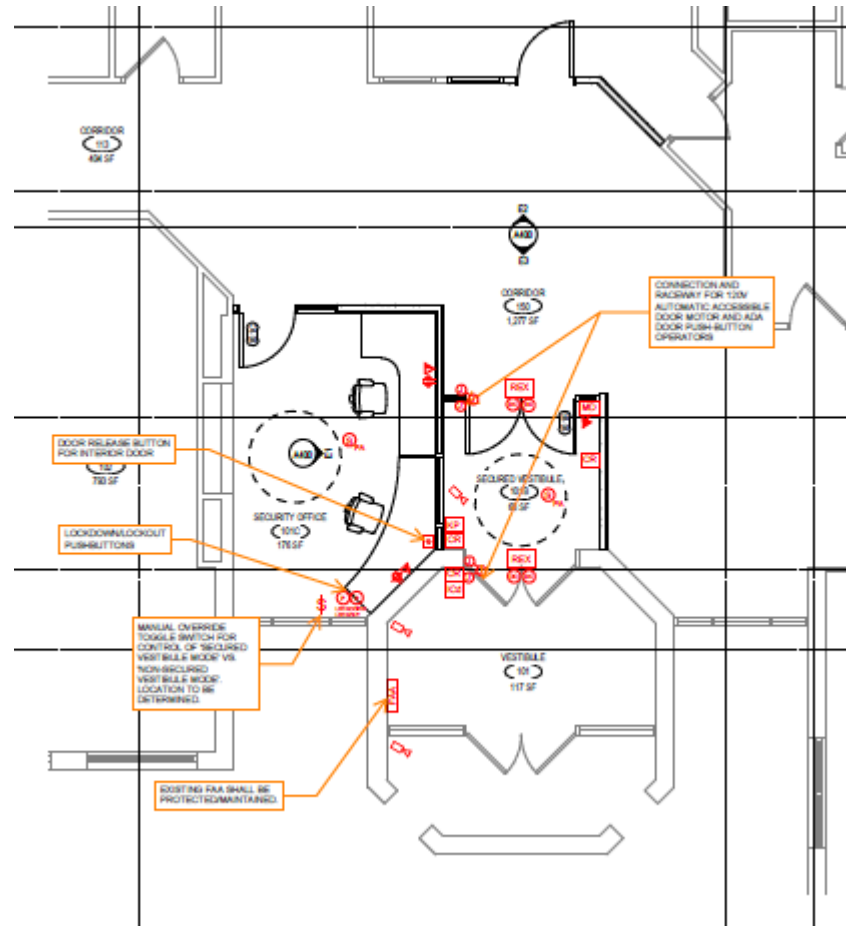
H&M – Contractor TBD



# Efficiency Future Ready Bergen Valley ES

Design  
Development  
Bids 3/15/22

EUA – TBD

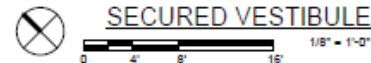
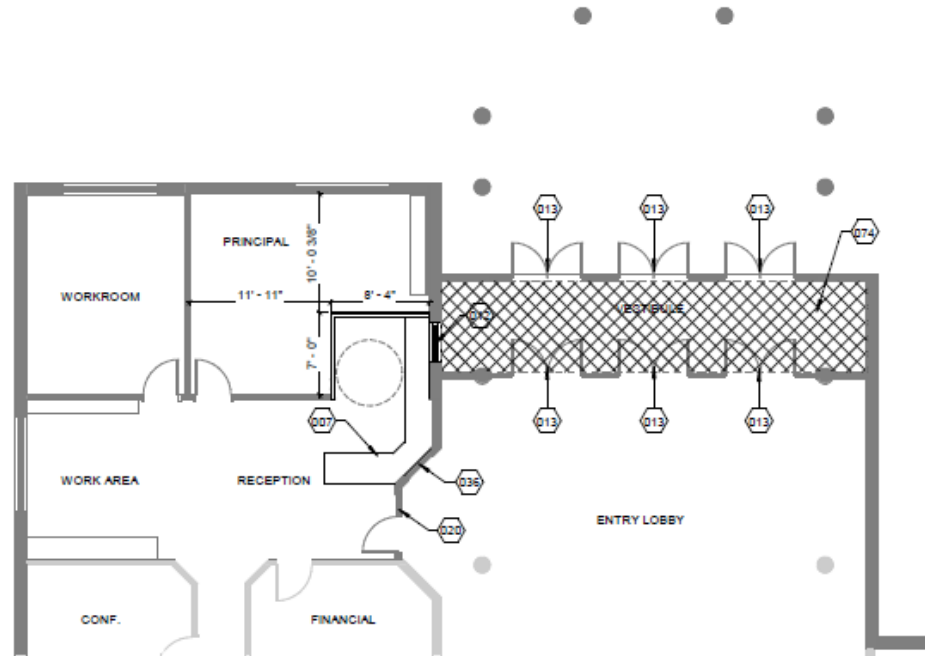




# Efficiency Future Ready Emory ES

Construction  
Documents  
Bids 2/15/22

## Treanor HL- Contractor TBD

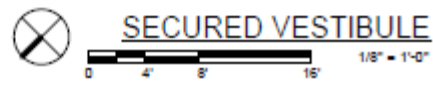
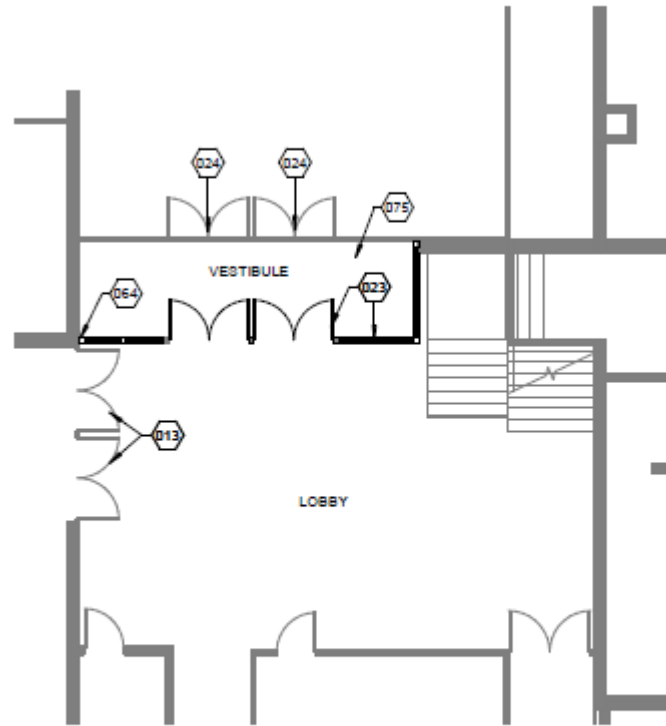


1

# Efficiency Future Ready Red Rocks ES

Construction  
Documents  
Bids 2/15/22

## Treanor HL- Contractor TBD

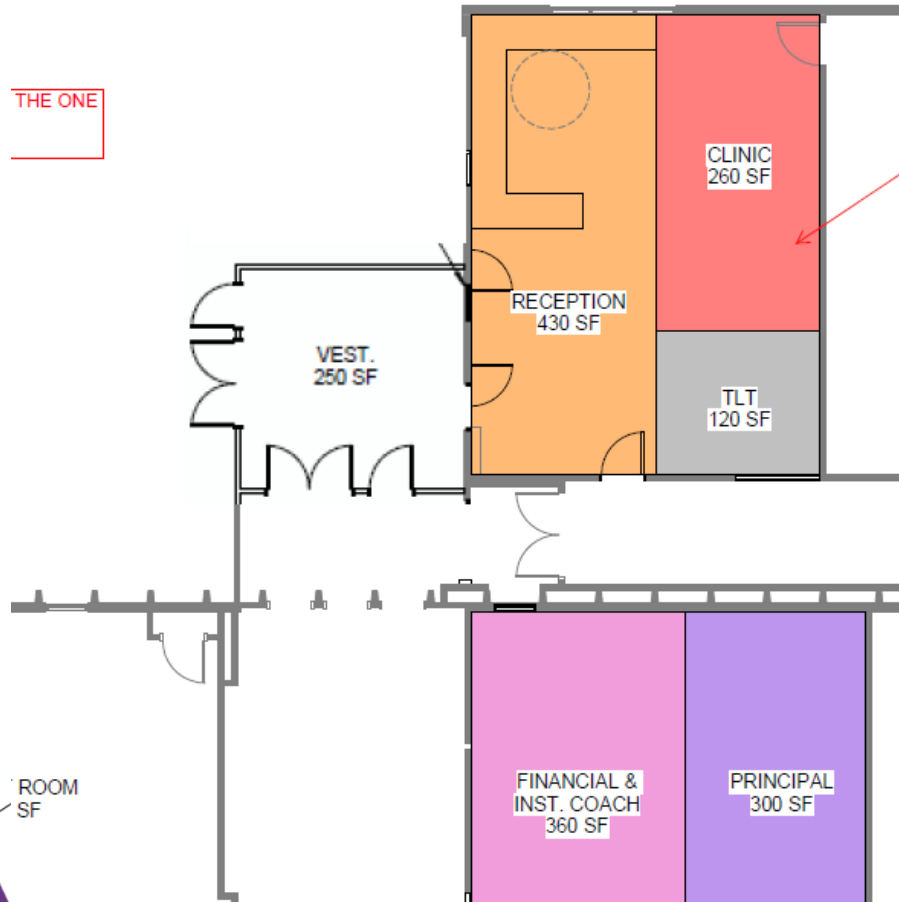


2

# Efficiency Future Ready Westgate ES

Construction  
Documents  
Bids 3/22/22

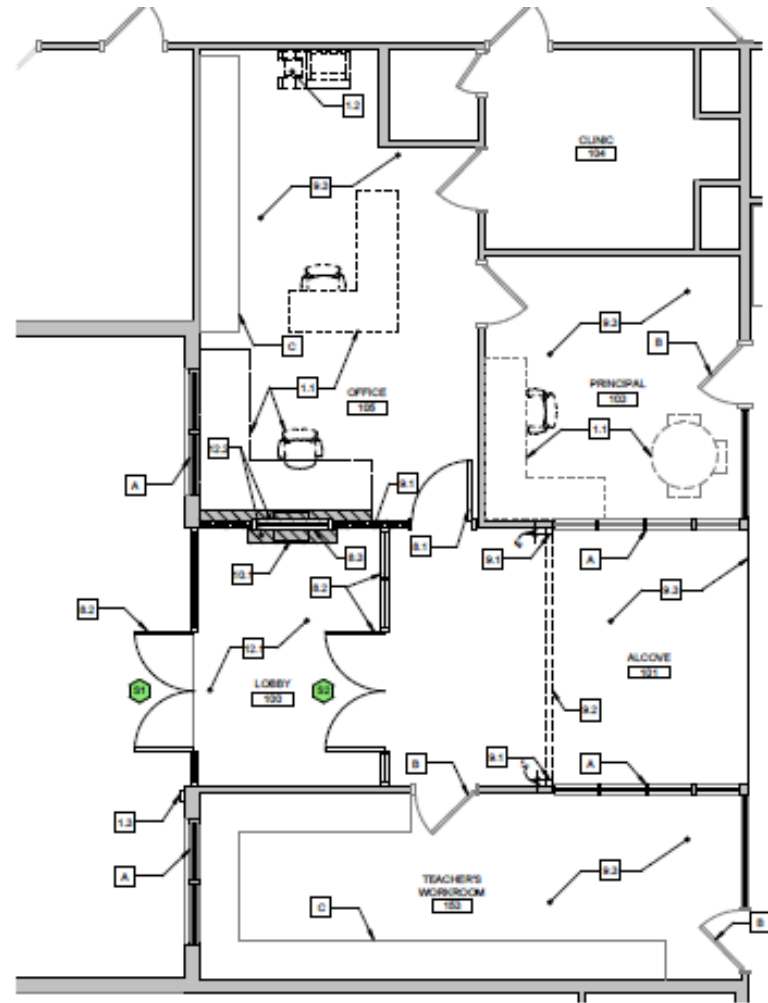
Treanor HL- TBD



# Efficiency Future Ready Peck ES

Larson Incitti – TBD

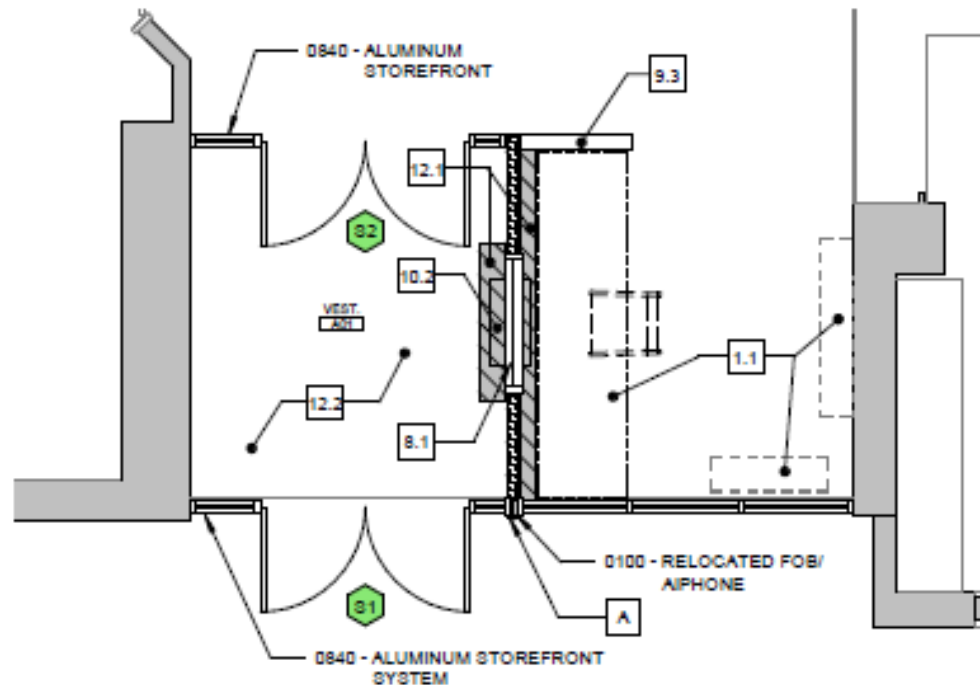
Design  
Development



# Efficiency Future Ready Secret ES

Design  
Development

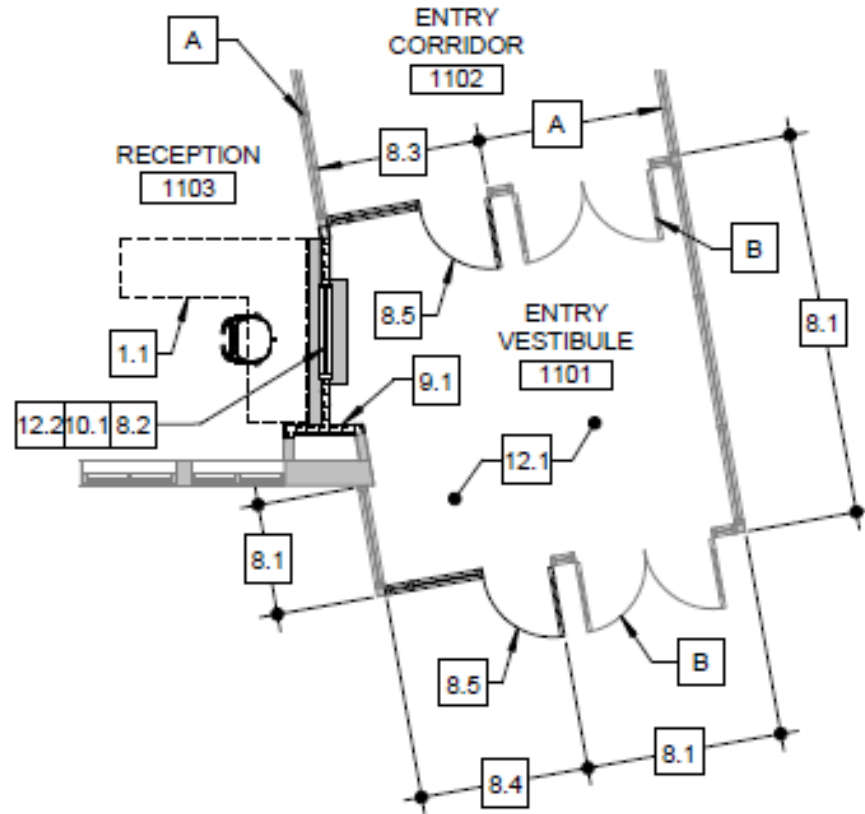
Larson Incitti – TBD



# Efficiency Future Ready Creighton MS

Design  
Development

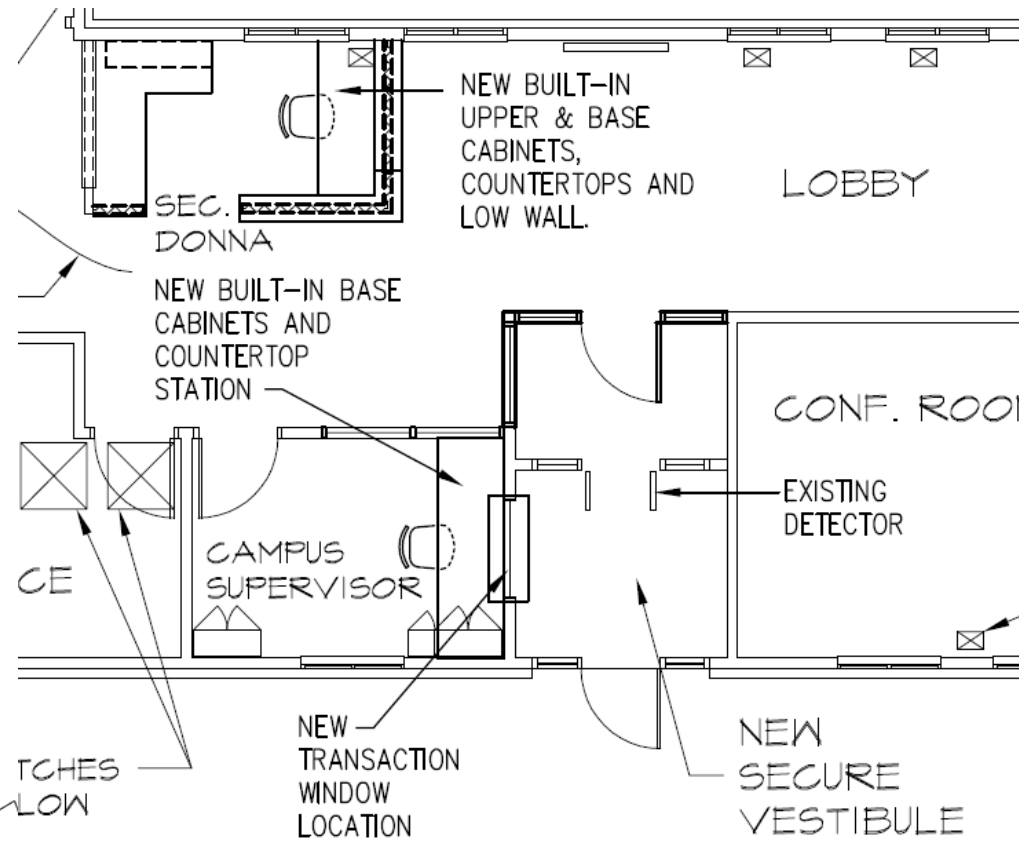
Larson Incitti – TBD



# Efficiency Future Ready Longview HS

Construction  
Documents  
Bids 2/16/22

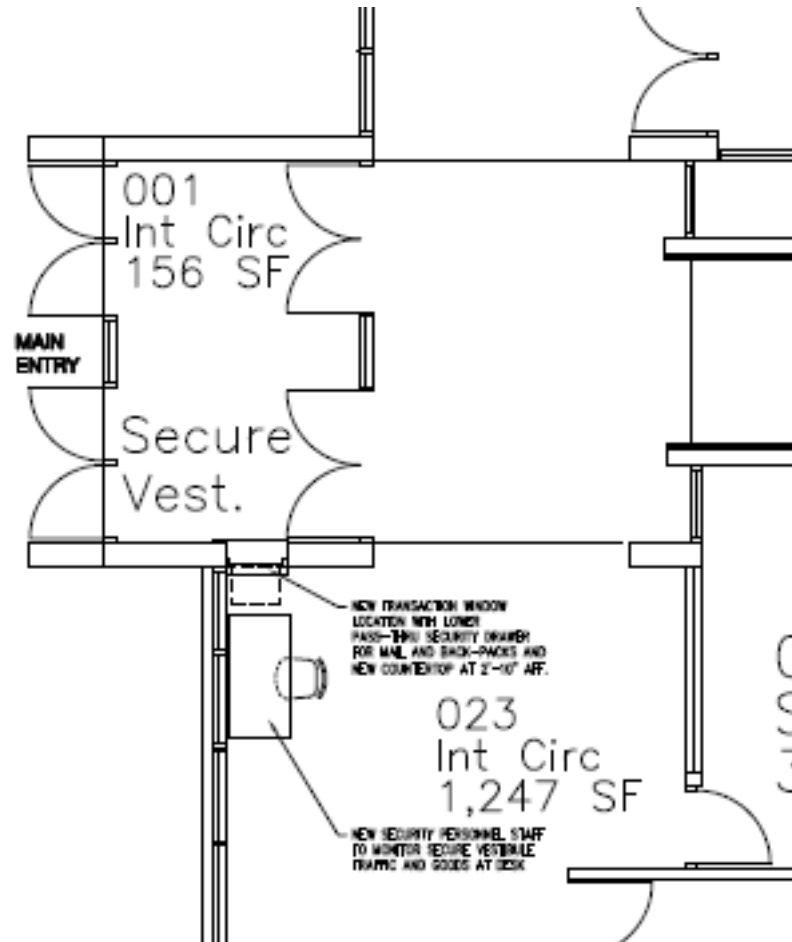
## Mellin & Associates – TBD



# Efficiency Future Ready Shelton ES

Construction  
Documents  
Bids 2/16/22

Mellin & Associates – TBD

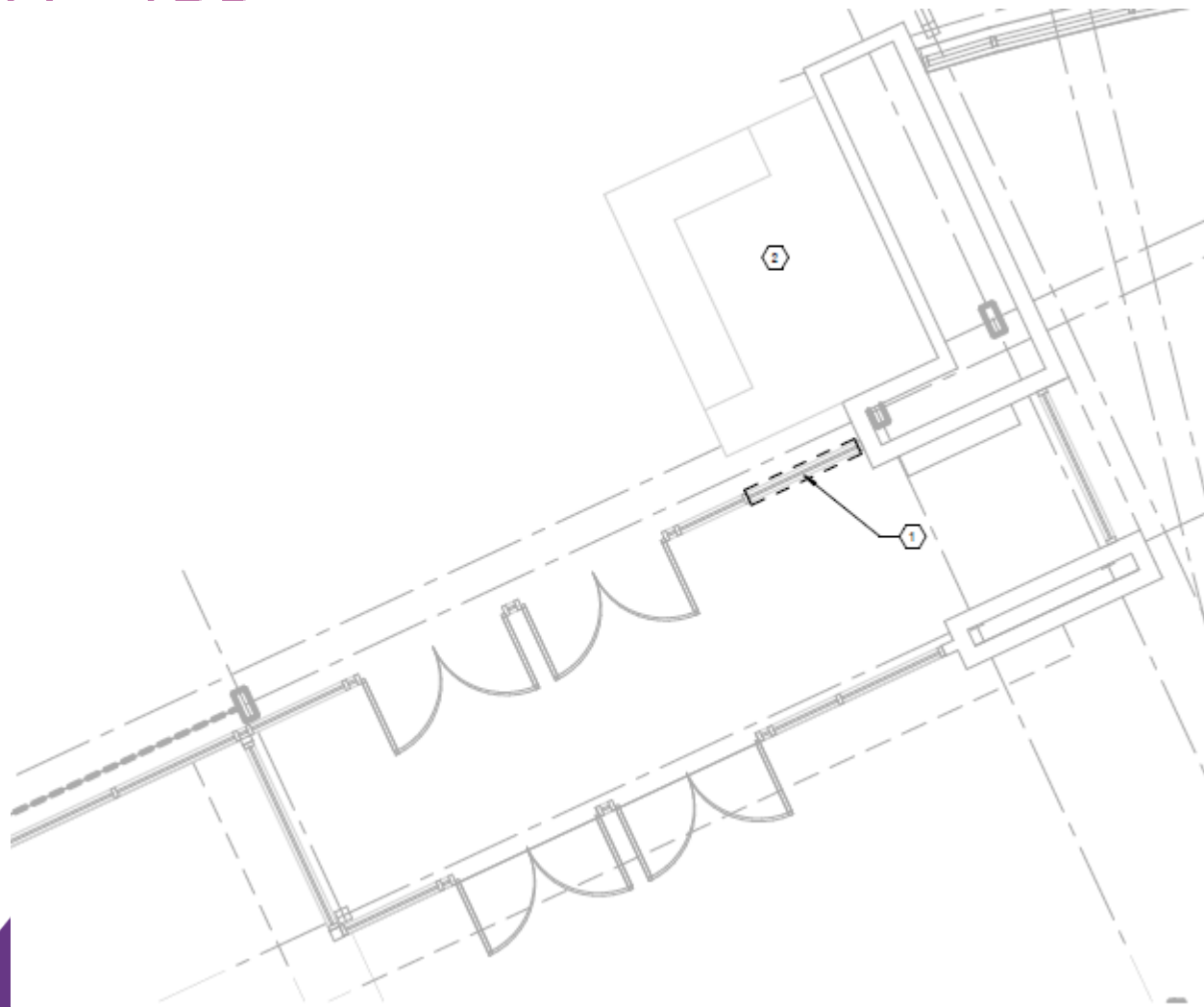




# Efficiency Future Ready Bear Creek HS

Design  
Development

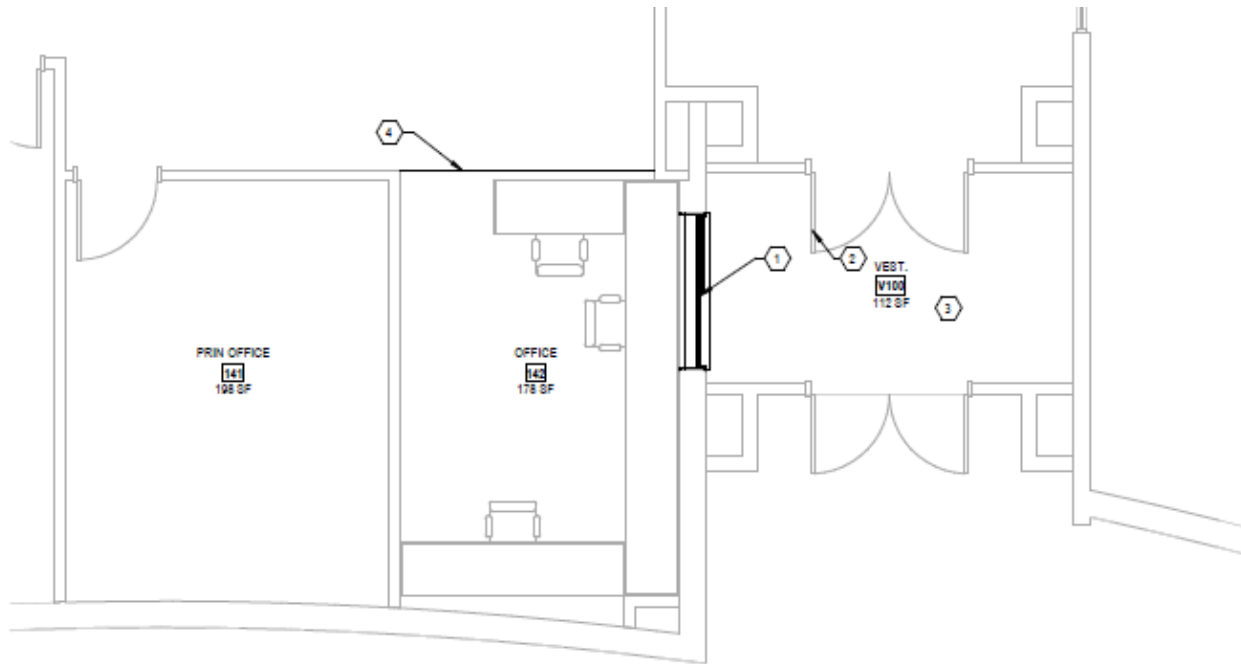
MOA – TBD



# Efficiency Future Ready Blue Heron ES

Design  
Development

MOA – TBD

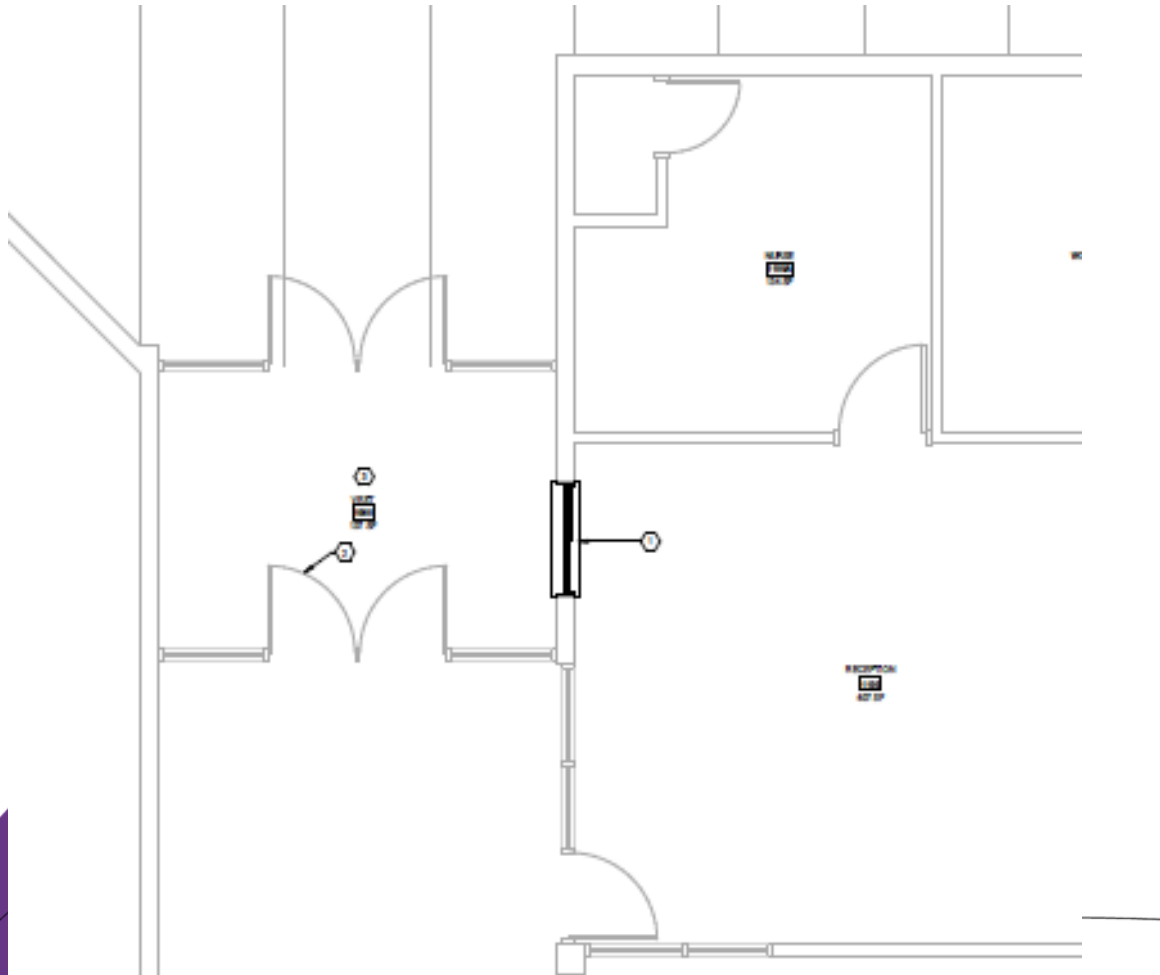


1 LEVEL 1 - ENLARGED PLAN OF MAIN ENTRY  
1/4" = 1'-0"

# Efficiency Future Ready Colorow ES

Design  
Development

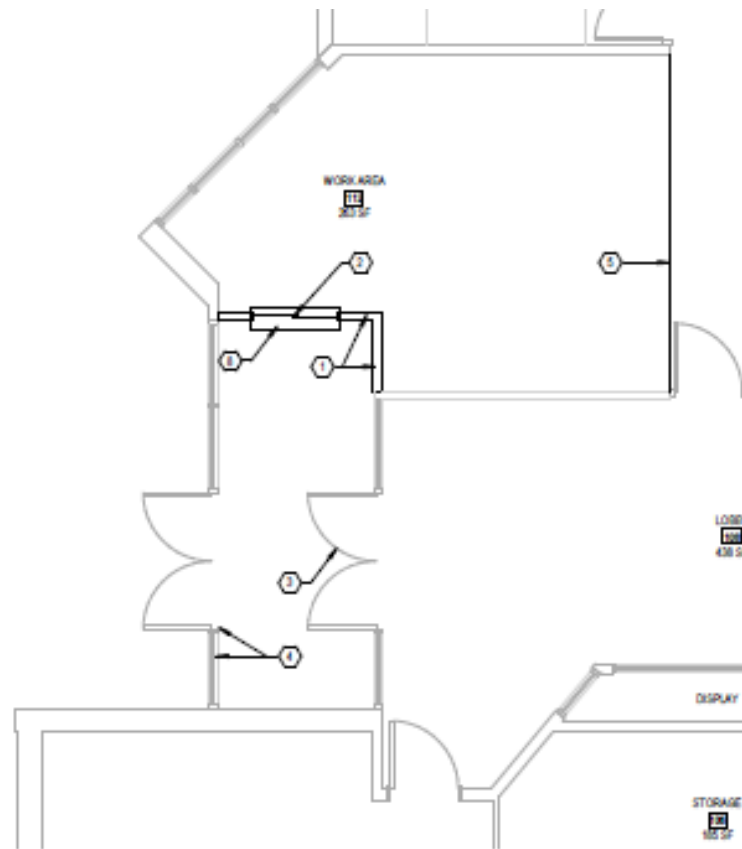
MOA – TBD



# Efficiency Future Ready Ute Meadows ES

Design  
Development

MOA – TBD



1 ENLARGED PLAN - MAIN ENTRY  
WF = 10'

# Efficiency Future Ready Warren Tech North

Construction  
Documents  
Bids 3/15/22

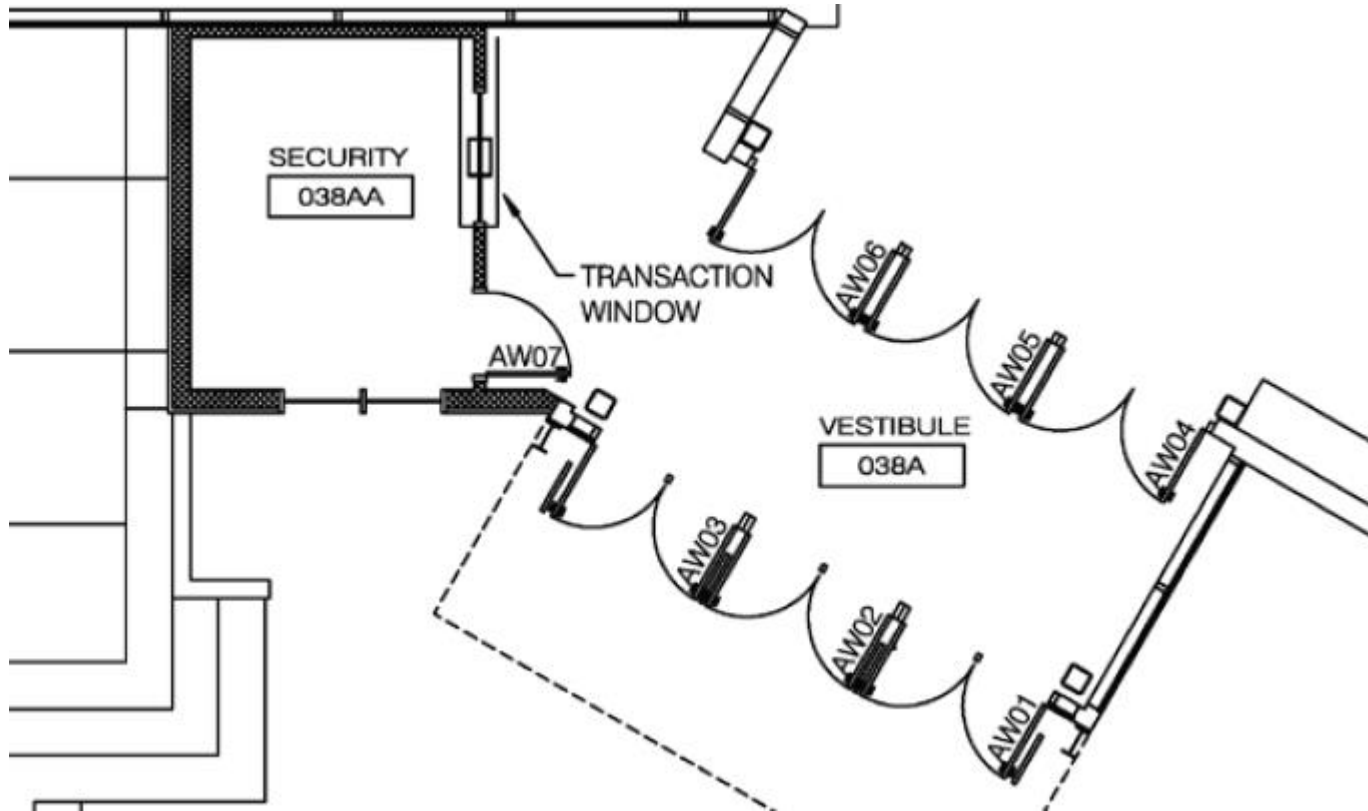
LOA – TBD



# Efficiency Future Ready Arvada West HS

Construction  
Documents  
Bids 3/15/22

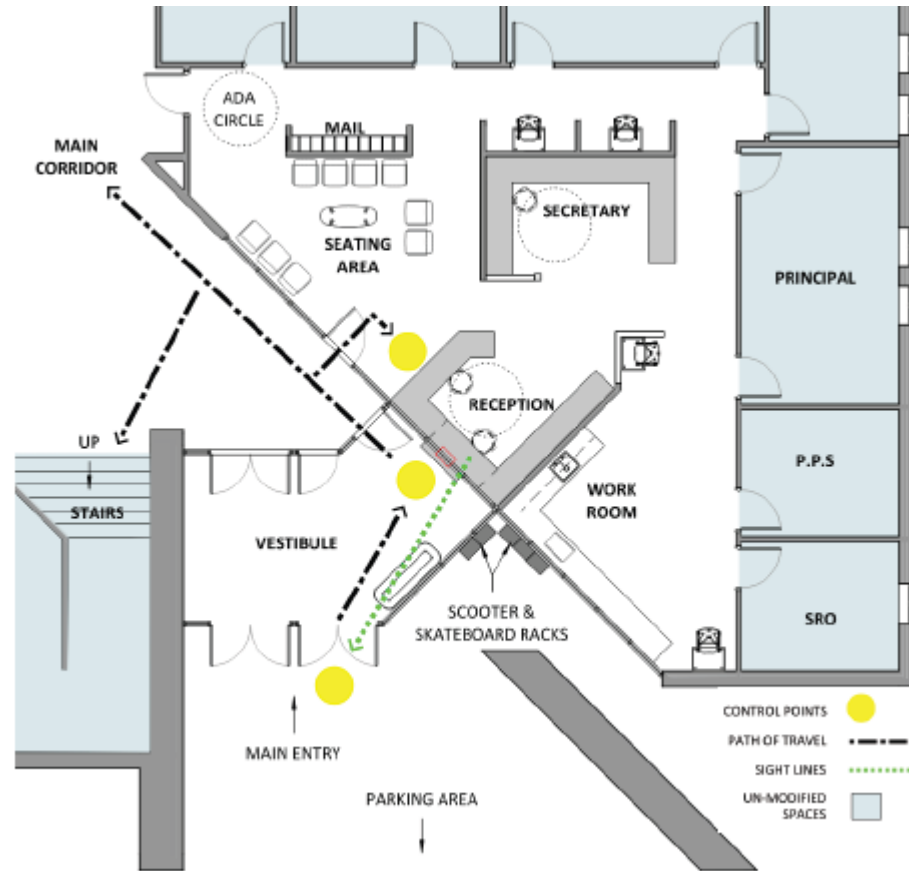
LOA – TBD



# Efficiency Future Ready Mandalay MS

Construction Documents  
Bids 3/8/22

RB+B – TBD

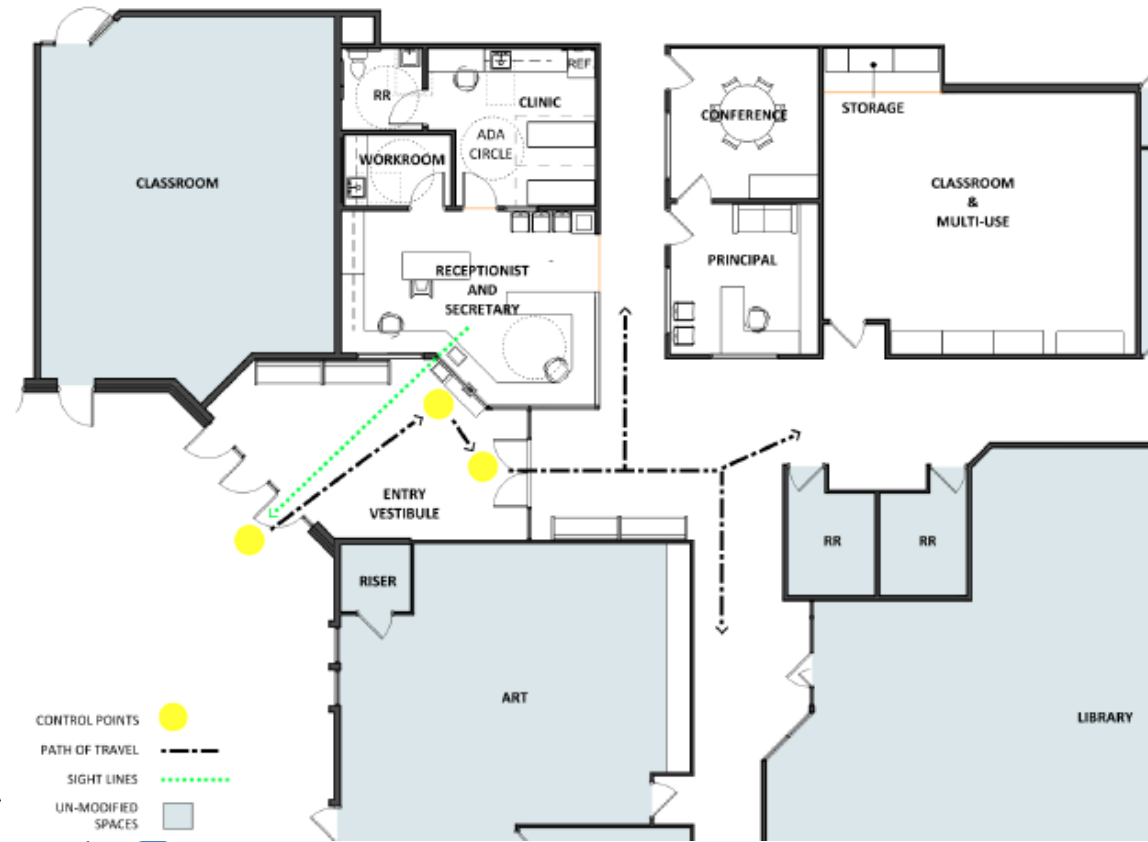


Proposed Secure Entry Plan

# Efficiency Future Ready Warder ES

Construction  
Documents  
Bids 3/8/22

RB+B – TBD

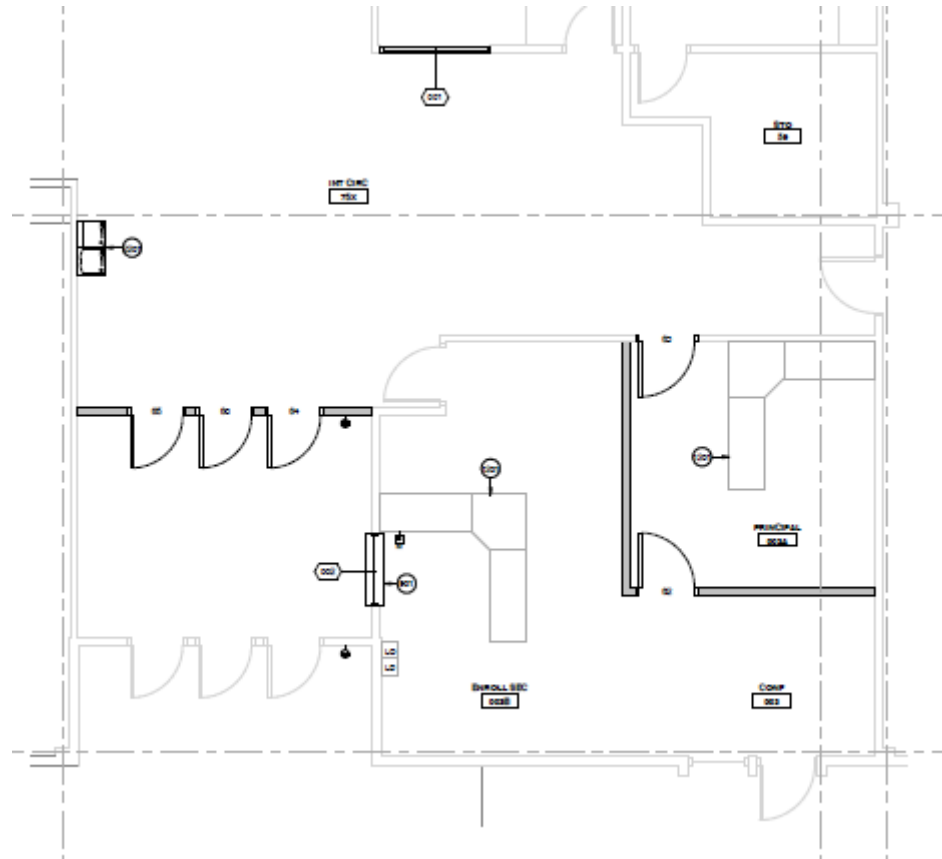




# Efficiency Future Ready Thomson ES

Construction  
Documents  
Bids 2/17/22

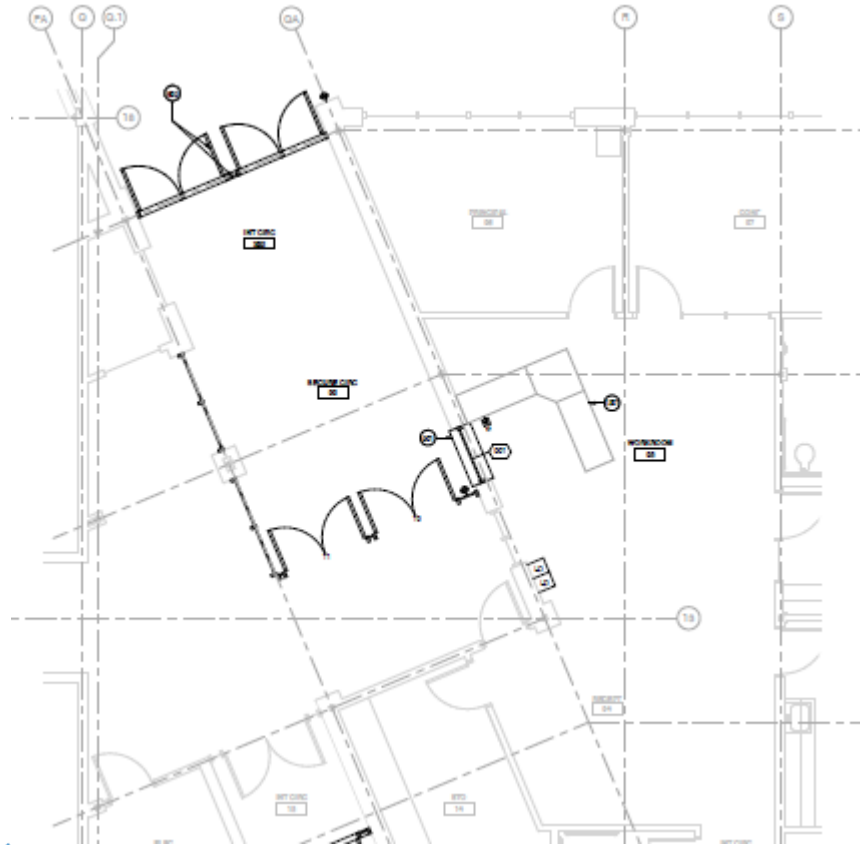
AMD – TBD



# Efficiency Future Ready Green Mountain ES

Construction  
Documents  
Bids 2/17/22

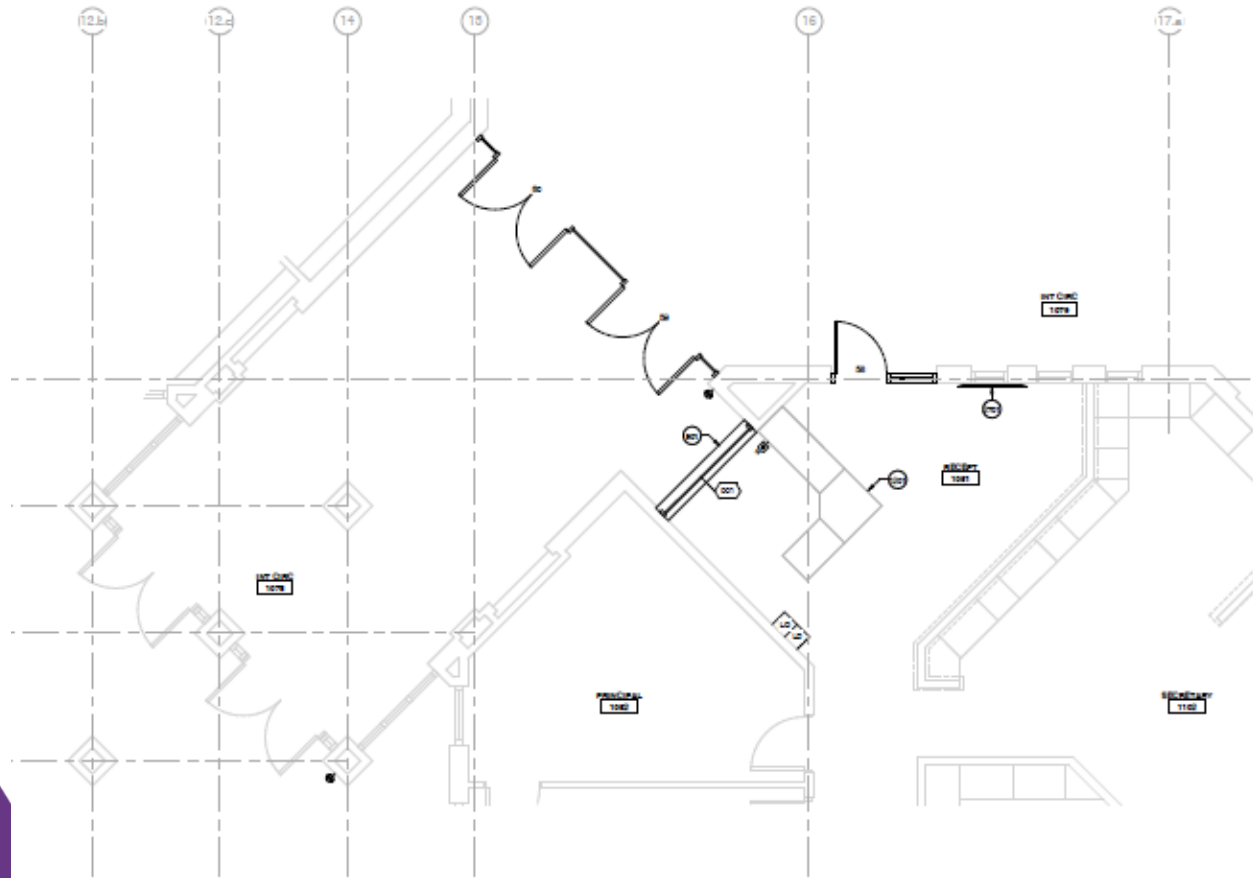
AMD – TBD



# Efficiency Future Ready Stevens ES

Construction  
Documents  
Bids 2/17/22

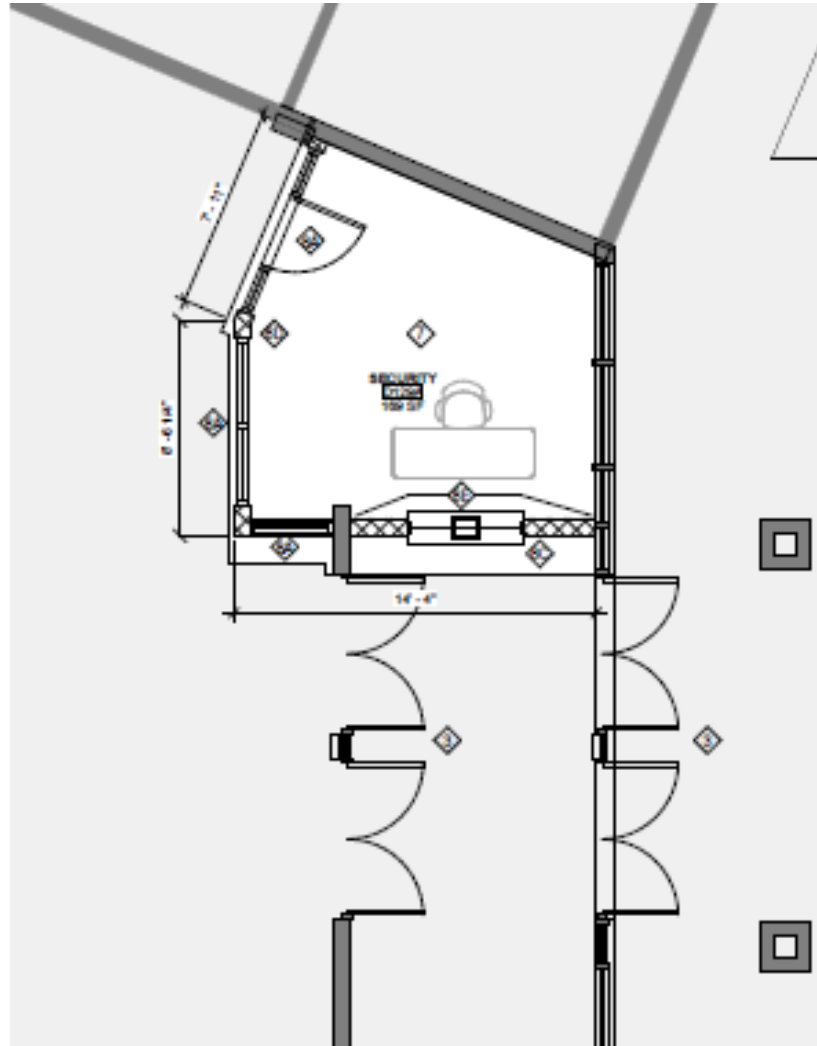
AMD – TBD



# Efficiency Future Ready Lakewood HS

HCM – TBD

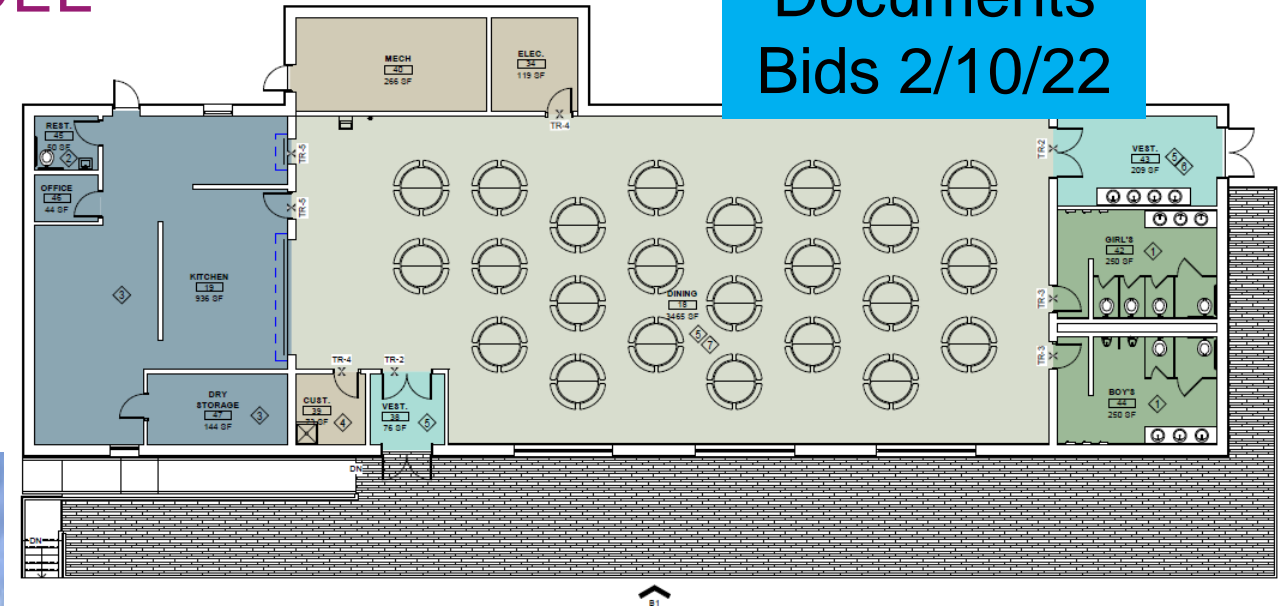
Construction  
Documents  
Bids 2/9/22



# Efficiency Future Ready Mount Evans OEL

HCM – TBD

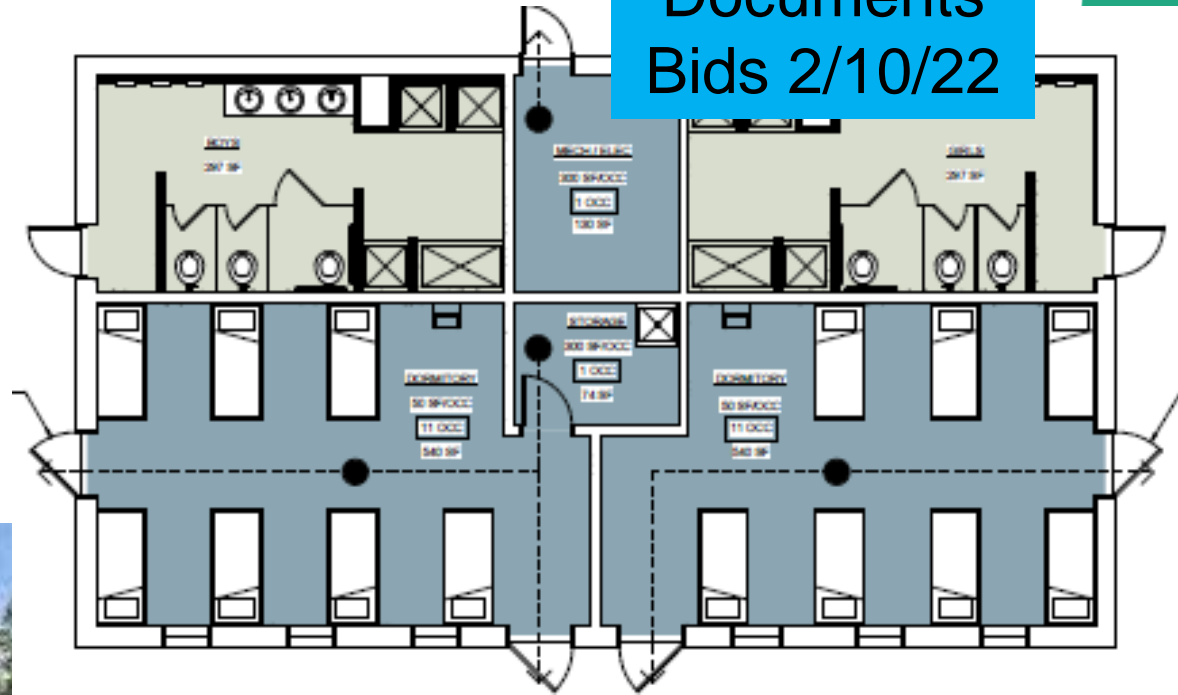
Construction  
Documents  
Bids 2/10/22



# Efficiency Future Ready Windy Peak OEL

HCM – TBD

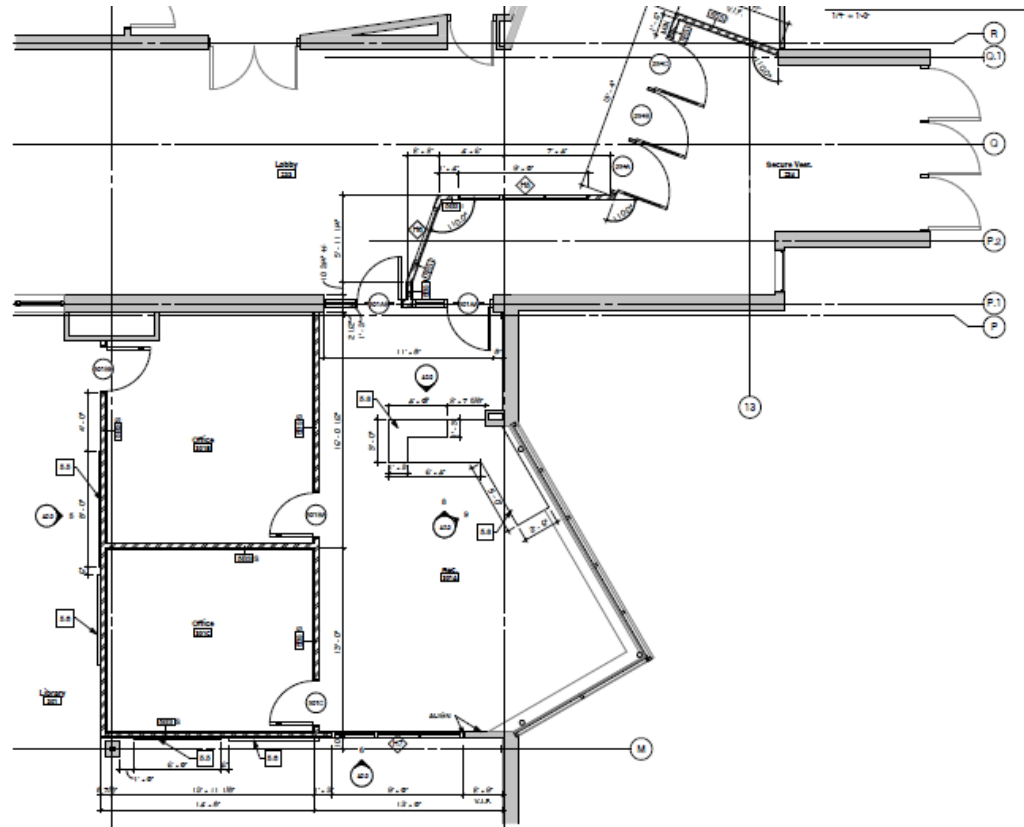
Construction Documents  
Bids 2/10/22



# Efficiency Future Ready North Arvada MS

Construction  
Documents  
Bids 3/22/22

Eidos – TBD

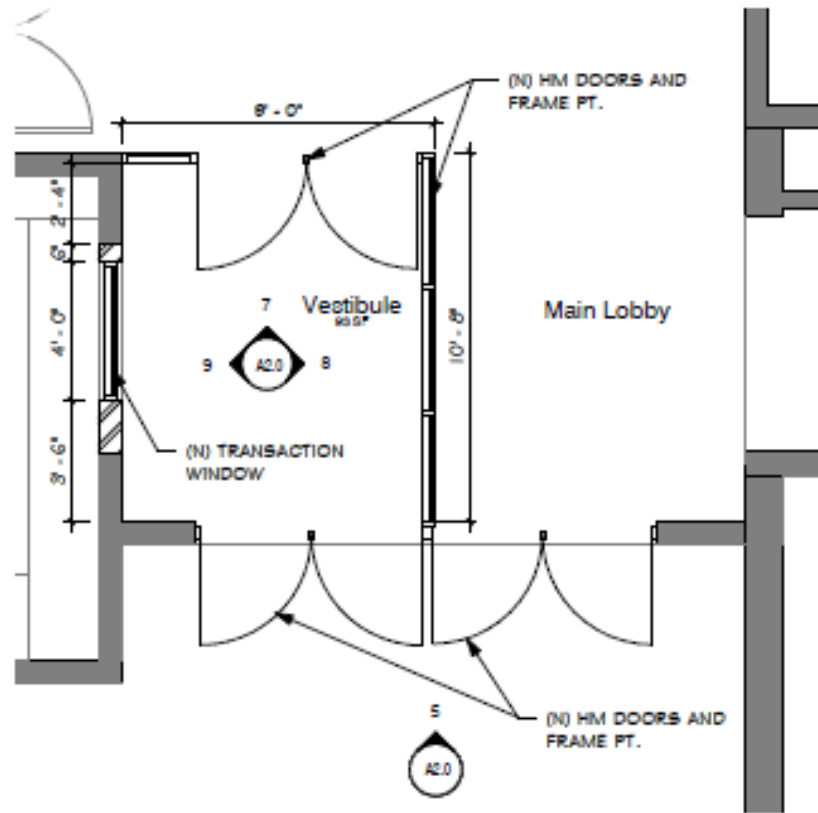


4. Secure Vestibule and Office Enlarged Plan  
1/8" = 1'-0"

# Efficiency Future Ready Slater ES

Construction  
Documents  
Bids 3/17/22

Eidos – TBD



## 4. Enlarged Plan

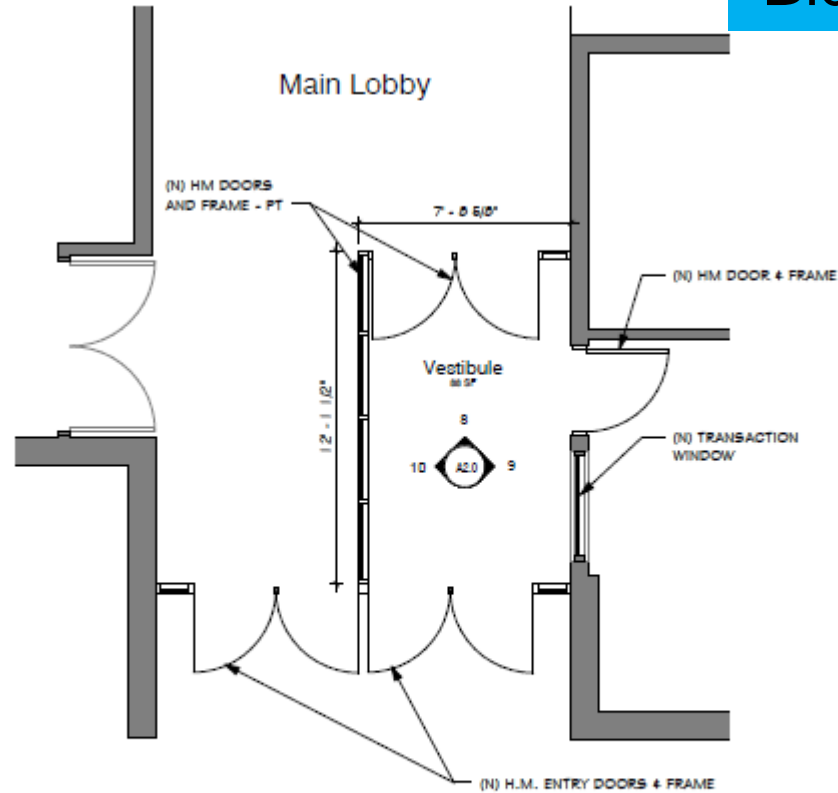
1/4" = 1'-0"



# Efficiency Future Ready Wilmore Davis ES

Construction  
Documents  
Bids 3/17/22

Eidos – TBD



## 1. Enlarged Plan

1/4" = 1'-0"

# Efficiency Future Ready Wheat Ridge HS

Design  
Development

Eidos – TBD



# Efficiency Future Ready Wheat Ridge HS

Design  
Development

## Eidos – TBD

Entry | Cafeteria | Commons:



# Efficiency Future Ready Wheat Ridge HS

## Design Development

Commons:



# Next Meeting 2/17/22